

Rose Hill

Elementary School

HANDBOOK

2015-2016



After reading through the Rose Hill Handbook,
**the "Signature Page" on page 56 must be completed, signed and
returned to the classroom teacher.**



Copies of this page are available in your orientation packet or the school office.
Thank you.

The Rose Hill Pledge

*I promise to do my very best today.
I will treat myself and others with respect.
I will challenge myself to learn something new today.
I will show Rose Hill pride in all that I do.*

M. Fleming - 2004

**760 Rosehill Road
Reynoldsburg, Ohio 43068
Phone: (614) 367-2380 Fax: (614) 575-5868**

Ms. Kim Lewis-Buehler, Principal

Rose Hill Elementary School

Table of Contents

	<u>Page</u>		<u>Page</u>
Abuse/Neglect	13	Homework Requests	10
Academics	14-15	Missing Child Act	9
Additional Services	30	Nine-Week Grading Schedule	14
Address/Telephone Changes	14	Phone Numbers	5
Arrival/Departure Procedures	7-8	PIE (Partners In Education)	29
Attendance Policy & Procedures	8-10	Playground Safety	23-24
Bicycles	25	Release of Information	13
Bus Rules	26-28	Reynoldsburg. Board of Education	34
Cafeteria/Food Services	11	RCSD – Board Policies:	
Calendar 2014-2015	54-55	Compact of Respect	33
Cell Phones, Electronic Devices/Toys	23	Computer/On-Line Service	35-36
Conduct/Discipline Policy	16-21	FERPA	37-38
Conferences	14	Harassment, Intimidation and Bullying	39-43
Contacting the School	6	Code of Conduct	43-47
Crossing Guard	8	PBIS (Restraint and Seclusion)	49-53
Daily Schedule	6	Open Enrollment	53-54
Dress Code Policy	21-23	School Hours	6
Emergency Closing	7	SIGNATURE PAGE	56
Family Trips/Vacations	9	Split Start to 2014-2015	6
Field Trips & Assemblies	21	Staff Roster	4
Health Services	12-13	Tardiness	9
Highly Qualified Teachers	15-16	Text Books/Library Books	10
Home/School Compact for Student Learning	31-33	Traffic Safety	25-26
		Visitors	10
		Volunteers/Fingerprinting	29



Rose Hill Elementary School
760 Rosehill Road
Reynoldsburg, OH 43068
(614) 367-2380 Fax (614) 575-5868

Ms. Kim Lewis, Principal

Dear Rose Hill Parents and Students,

The Rose Hill Staff and I would like to welcome you to the 2015-2016 school year. Education at Rose Hill Elementary is designed to meet the needs of each individual student. We believe that every child has the ability to learn and make positive choices at school. With the partnership of parents and our staff we will nurture and develop every child: academically, physically, socially and emotionally. We are committed to provide opportunities for children to be Living In Excellence by adhering to ROCK (Responsibility, Outstanding Effort, Community and Kindness).

To increase the degree of educational success, it is essential that teachers, parents and administrators communicate openly and frequently concerning the progress of students.

The Rose Hill Staff will work in partnership with parents. Parents must play a key role in the education of your children. Your words of encouragement, hugs when the day has been rough, celebrations of success, interest in your child's work and presence at school is vital!

Parents Count! Come to school, join PIE (Partners In Education), and volunteer at school. Your involvement will show your children that you value their education. Together we can provide a successful year,

Thank you for sharing your children with us. Please do not hesitate to contact us with any questions or concerns.

Sincerely,

Ms. Kim Lewis
Principal

Rose Hill Elementary School

Staff Roster

2015-2016



Ms. Kim Lewis-Principal

Candace Wyant – Secretary

Kindergarten

Britney Spears (rm. 03)
Arielle Holdren (rm. 04)

1st Grade

Kristin Bender (rm. 23)
Molly Chang (rm. 28)
Randilyn Blankenship (rm. 27)
Chelsea Fuhrer (rm. 29)

2nd Grade

Carol Browe (rm. 17)
Caroline Hohl (rm. 18)
Amy Rodenmayer (rm. 19)

3rd Grade

Michele Fleming (rm. 26)
Amie Rudder (rm. 25)
Kirstyn Gecina (rm. 24)

4th Grade

Jennifer Woodberg (rm.07)
Alisa Limbers (rm 06)
Maria Wolfe (rm.05)

Cooks

Pam Saraniero Head Cook
Melissa Rosen
Terry Wince

Custodians

Jeff Miller Head Custodian
TBD
Emily Lewis

Kiddie Academy After-School Care

Ebony Harris Site Director

Clinic

Kary Perkovic School Nurse
Lisa Null Health Aide

Special Area Teachers

Scot Ashton (rm. 16) Music Teacher
Janet Benedict (rm. 16) Music Teacher
Amy Gochenour (rm. gym) Physical Education Teacher
Jenifer King (rm.30) Innovation Art Design

Social Worker

TBA (rm. 501) Social Worker

Intervention Staff

TBA (rm. 09) SLP/Title One Intervention Teacher
Alison Cross (rm. 10) Title One Intervention Teacher
Mia Brower (rm. 10) IFL Coordinator
Judy Helm (rm. 21) Intervention Specialist
Stephanie Herman (rm. 09) ESL Teacher
Amanda Hughes (rm. 21) Intervention Specialist
TBA (rm. 09) SLP for Pre-School/DD Unit
Tenisha Johnson (rm. 08) Psychologist
TBA (rm. 22) Behavior

Para-Professional Staff

TBA (rm.30) Health and Wellness
Cathy Pierro (rm.10) Intervention
Rhea Pierron (rm.10) Intervention
Katheryn Kister (rm.14) Library

DD Unit (rm.1)

Deb Tumblison Special Education Teacher
Jeanie Kunkle Para-Professional

DD Unit (rm.13)

Diana McClain Special Education Teacher
Beth Speaks Para-Professional
Brenda Mullen Para-Professional

Pre-School (rm. 2)

Nina Markovic Teacher
Audra Mauter Para-Professional

Pre-School (rm.4)

Elaine Fentiman Teacher
TBA Para-Professional

Important Phone Numbers

Rose Hill School Main Office: **614-367-2380**

Rose Hill Fax: **614-575-5868**

Absence Line: **614-501-2398**

Website: www.reyn.org

Reynoldsburg City Schools Administrative Center

7244 East Main Street

614-501-1020

Reynoldsburg City Schools Transportation Department

7932 East Main Street

614-501-1041



Reynoldsburg High-Livingston Campus

- 614-501-4000 614-501-4030
6699 E. Livingston Ave.

Reynoldsburg High-Summit Campus

- 614-501-2300 614-501-2310
8579 Summit Road

Baldwin Road

- 614-367-1600
2300 Baldwin Road

Waggoner Road Junior High

- 614-501-5700
360 S. Waggoner Road

Hannah J. Ashton

- 614-367-1530

Police Department (non-emergency)

- 614-866-6622
Emergency: 911

Fire/Medical (non-emergency)

- 614-864-2445
Emergency: 911

Reynoldsburg City Hall

- 614-322-6800

Reynoldsburg Parks & Recreation

- 614-322-6806

Reynoldsburg Street Department

- 614-322-5800

Waggoner Road Middle

- 614-501-5600
340 S. Waggoner Road

French Run Elementary

- 614-367-1950
1200 Epworth Ave

Herbert Mills Elementary

- 614-367-2160
6826 Retton Road

Slate Ridge Elementary

- 614-501-5500
7199 Taylor Road SW

Summit Elementary

- 614-501-5530
8591 Summit Road

Taylor Road Elementary

- 614-367-2930
8200 Taylor Road



<u>SCHOOL HOURS</u>	
Grades 1-4	8:05 a.m.— 2:35 p.m.
AM Kindergarten	8:05 a.m.— 10:55 a.m.
PM Kindergarten	11:45 a.m.— 2:35 p.m.

A Split Start to the 2015-2016

A split start insures a smooth transition into the new school year for students and parents. The split-start at Rose Hill will follow this procedure:

- **A student, whose last name begins with A-L, will attend school Monday, August 17, 2015 but will NOT attend school on Tuesday, August 18, 2015.**
- **A student, whose last name begins with M-Z, will NOT attend school Monday, August, 17, 2015 but WILL attend school on Tuesday, August 18, 2015.**

ALL STUDENTS WILL ATTEND SCHOOL ON Wednesday, August 19, 2015

Contacting the School

We understand that there may be times when the parent must contact the student during the school day. Please call the general telephone number of the school (**614-367-2380**) and the office personnel will relay the message to the student. Teachers cannot receive phone calls during instructional time unless it is an emergency. It is important that we limit as many disruptions to the classroom as possible.

DAILY SCHEDULE

7:55 a.m.	Doors Open Optional Grab and Go Breakfast to eat in Homeroom
8:05 a.m.	Morning Blast Off for Grades 1 through 4 in the gym. Kindergarten students go directly to their classroom. 1 st through 4 th students go to the gym.
8:30 a.m.	Deadline for parents to notify the office that a student will be absent
10:15 a.m.	Students in Grades 1-4 entering at or after this time will be marked as a half-day absent
10:55 a.m.	A.M. Kindergarten dismissal
11:00 a.m.	Latest pickup for A.M. kindergarten
11:40 a.m.	Earliest time for P.M. Kindergarten students arrival
11:45 a.m.	School day begins for P.M. Kindergarten
12:35 p.m.	Students in Grades 1-4 leaving at or prior to this time will be marked as a half-day absent
2:35 p.m.	School day ends for P.M. Kindergarten and Grades 1-4



Emergency Closing

In the event of an emergency, it may be necessary to close school for the day. Such announcements will be made within one hour prior to the school day. If the school is closed due to inclement weather, school will reopen the following day unless further closing announcements are made. Please check your local television and radio stations for updates.

It may also be necessary to close school while in session. Always make sure you and your child have an alternate plan in the event of an early dismissal. Thank you.

Arrival and Departure Procedures

Students will need to line up outside the front doors or outside the rear playground doors when they arrive. Students must wait to come in until they are invited in by a Rose Hill staff member. A bell will sound at 7:55 a.m.—this is a reminder bell for staff, not a signal for students to enter.

ROCK Guidelines for Success at Arrival and Dismissal

1. Use kind words.
2. Use inside voices while in the building.
3. Make sure you have all of your belongings.
4. Keep your belongings to yourself.
5. Walk at all times.
6. Stay out of the parking lot unless you are with an adult.
7. Arrival—wait in line responsibly.
8. Departure—stay off of the playground and go straight home.

If you make any changes in your child's pick up and/or drop off procedures during the year, notification must be made to the office and the teacher by 1:30 p.m. the day of the change.

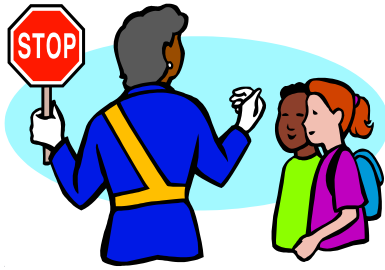
In certain circumstances a "Transportation Form" will need to be completed.

Thank You



All bus students must observe **bus rules** (see pages 26-28)





Crossing Guards

Crossing guards will be positioned on Rose Hill Road in front of the school and on Roundelay Road at the crosswalk behind the school at the following times:

Morning	7:50 a.m. - 8:05 a.m.
Afternoon	2:35 p.m. - 2:45 p.m.

Please instruct your child to cross the street under the supervision of the crossing guards.

Attendance Policy and Procedures



When your child is absent or tardy:

1. Parents are to notify the school by 8:30am. Please call the office at 614-367-2380. This is a 24-hour line and can accept voice mail at any time.
2. A **written excuse** must **also** be sent to school with the child and given to the teacher within three days of his/her return to school or the absence will be unexcused. If your child must leave school early, we request that a note be given to the teacher on or before the day that the student is to be dismissed. When picking up your child, the parent must report to the office and the child will then be called to the office. This prevents disruption of classroom instruction.
3. Reynoldsburg City Schools will refer excessive, unexcused absences and tardiness to the appropriate county juvenile court. The events that will lead to a referral are as follows:
 - Five (5) unexcused absences – a letter will be sent to the parent by the building principal.
 - Ten (10) absences, excused or unexcused – a conference may be scheduled with the parents, the school social worker or guidance counselor, and/or the principal to create an action plan that will prevent future absences. At this time, a doctor's note may be required for any additional absences to be excused.
 - Fifteen (15) unexcused absences will result in a referral being made to Children Services and charges may be filed, on parents, with the Prosecutor's Office. A referral to the Reynoldsburg Police department may also be initiated.
 - Any absence due to discipline issues will be considered unexcused absences.

STUDENT ABSENCES AND EXCUSES

Policy JED

Regular attendance by all students is very important. In many cases, irregular attendance is the major reason for poor school work; therefore, all students are urged to make appointments, do personal errands, etc. outside of school hours.

Reasons for which students may be excused include, but are not limited to:

1. Personal illness of the student;
2. Illness in the student's family;

3. Needed at home to perform necessary work directly and exclusively for parents or legal guardians (applies to students over 14 years of age only);
4. Death in the family;
5. Quarantine for contagious disease;
6. Religious reasons;
7. Traveling out of state to attend a Board-Approved enrichment activity or extracurricular activity (applies to absences of up to four days)
8. Other reasons as determined by the Superintendent.

Each student who is absent must immediately, upon return to school, make arrangements with his/her teacher(s) to make up work missed. Students who are absent from school for reasons not permitted by State law may, or may not, be permitted to make up work. Each case is considered on its merits by the principal and the respective teacher(s). **Students are required to bring a note to school within three (3) school days after each absence explaining the reason for the absence or tardiness.**

The Board strongly discourages absence from school for vacations or other non-emergency trips. The responsibility for such absences resides with the parent(s), and they must not expect any work missed by their child to be retaught by the teacher. If the school is notified in advance of such a trip, reasonable efforts are made to prepare a general list of assignments for the student to do while he/she is absent.

Tardiness

All doctors, dentists, counseling sessions, court appearances or other scheduled appointments will be considered an excused tardy if appropriate documentation is submitted to the principal. All other tardy circumstances will be considered unexcused.



All tardies will be reported on the student's academic progress report.

If a child arrives late to school, he/she must report to the office along with the parent/guardian before going to the classroom. The parent/guardian must walk the child into the building and sign them in. Please do not drop off your child and drive away leaving them to walk into the school by themselves. Students are required to bring a note to school when they arrive or within three (3) school days explaining the reason for the tardiness.



Children will not be counted tardy due to late bus arrival.

Missing Child Act

Reynoldsburg City Schools support activities that may locate and identify a missing child. Efforts will be made by the school to identify possible missing children and the proper persons or agencies will be notified. School records from the most recently attended school and a copy of the birth certificate or comparable certificate will be obtained in order to verify the identity of a child when he/she is enrolled. **It is extremely important that parents or persons responsible for the child provide the school with a current address as well as home, work, cell, and emergency telephone numbers.**

Requesting Homework from Student Absences

1. **Parents must give the teacher at least ½ day notice if homework is requested.** Please call the school office (614-367-2380) to make arrangements.
2. Teachers will decide what work will be completed during the absence and what will be completed upon return.
3. Assignments completed during the absence are due upon the child's return to school.
4. Make-up assignments given after the absence will be due no later than the number of school days missed.
5. Parents are encouraged to help with directions and give examples, but all work must be completed independently by the student.



Visitors

Custodial parents and/or guardians are welcome to visit their child's classroom (*see below*) or to have lunch with their child. We ask that all parents/guardians sign-in each time they enter the school. You will be given a visitor's sticker to wear at that time so that our students will recognize that you are not a stranger in the building.



Visits to observe the classroom, however, need to be arranged with the teacher prior to the scheduled day of visit. Please allow at least a 24 hour notice.

All visitors other than the custodial parent or guardian must be on the approved list or granted permission in writing by the parent/guardian to visit. The 24 hour notice also applies here to a classroom observation visit. Anyone other than the parent/guardian wishing to pick up a student from school must have prior written approval from the custodial parent or legal guardian. Proper identification (photo ID/driver's license) will need to be presented to the secretary. If no prior approval is received, and the school personnel is unable to make proper contact with the parent, the visitor will not be granted permission to visit or to pick up the child from the school.

No pets are allowed inside the school building unless approved in advance by the principal.

Former students wishing to visit former teachers are not permitted during school hours but are most welcome to visit after school is dismissed.



Textbooks and library books are on loan to students for their use during the school year. Books should be kept clean and handled carefully. The books will be returned to the classroom teacher or the school librarian at the end of the school year. You will be required to pay for any lost or damaged textbooks or library book.

Cafeteria/Food Services

Reynoldsburg Schools federally supported school lunch program provides one-third of a child's daily nutritional needs in every meal. Lunches include 2 oz. of meat or alternative source of protein, 2/3 cup of fruit and/or vegetables, grains, and 8 fluid oz. of milk.

Students may bring a packed lunch or purchase a hot lunch from the school cafeteria.

**Full school lunch cost \$2.00 Extra milk cost \$0.50
Breakfast \$1.00**



Money may be sent in on a daily or weekly basis. Each student, however, has their own account with the cafeteria. Parents may deposit money in this account with the cafeteria personnel to cover several days in advance or online using PayForIt.net.

If you would like to check your child's current available account balance, you may contact Pam Saraniero, Rose Hill Head Cook, at 614-367-2379.

The yearly menu and link to PayForIt.net is posted on the school website at www.reyn.org.

You can access by clicking onto the Student Service Tab and then the Breakfast/Lunch Tab.

Children from families whose income is at or below specified levels are eligible for milk and/or meals free or at a reduced price. **A new application must be filled out by the end of September of the current school year in order to qualify for the program.** Applications are available online and in the school office.

If a student forgets his/her lunch, we will provide a peanut butter and/or jelly sandwich and a drink for the student for up to two days.

Parents/guardians are welcome to join their child for lunch or take them out for the full period. . All parents must sign out their children through the office prior to leaving the building. We encourage parents to go outside for recess with their child.

ROCK Guidelines for Success in the Cafeteria **Responsibility, Outstanding Effort, Community and Kind**

- Use inside voices.
- Use kind words.
- Use good manners.
- Eat only your own food.
- Clean up all of your trash.
- Use lunch items the way they were meant to be used.
- Stay in your seat until given permission to get up.
- Walk at all times.



No carbonated drinks
packed in student
lunches.
Thank you

Health Services

Our school has a health clinic available to students who have medical needs during the school day. The Rose Hill staff member will assist the child and determine the immediate medical need. It is important that an updated medical information form for your child be on file at all times. This form contains the necessary contact information to be used in case of emergency.



All students in kindergarten, grades 1 and 3 will have vision and hearing screenings during the school year. Parents will be notified if there is any evidence of vision or hearing problems.

It is our policy that any student found with **pediculosis (lice)** shall be excluded from attending school until he/she has been treated with an effective pediculicide. Prior to returning to school, the student and parent must meet with the school nurse to determine that the student is free of infestation.

All infectious diseases must be reported to the school nurse or health aide in a timely manner. It is then the school nurse's responsibility to report this information to the Board of Health.

Prescription Medications The Reynoldsburg Board of Education has adopted a policy, in compliance with Section 3313.713 of the Ohio Revised Code, stating that no prescription medications will be dispensed at school, except where vital. The Board realizes that in exceptional circumstances, the child's physician will deem it absolutely necessary for the child to receive medication during the school day. If it is essential that prescription medications be administered during the school day, and the parent cannot be at the school to administer the medication, [Prescription Medication Request form](#) must be completed and returned to the school principal before school personnel will dispense any medication. All sections must be completed on both pages.

It is the parent's responsibility to personally bring this completed form and the medication in the ORIGINAL container to the principal at your child's school. **Under no circumstances should your child bring to school, or be in possession of, any type of prescription medication.**

Over-the-Counter Medications

Cough drops may be brought to school for students to receive as needed. A note from the parent must accompany the cough drops for the student to begin taking the drops at school. The classroom teacher will keep the cough drops in his/her room for when the child needs them.

If it is absolutely necessary for your child to receive non-prescription medication during the school day and you cannot be there to administer it, please complete the [Non-Prescription Medication At School form](#). All sections of the form must be completed, and the form must be returned to the school principal before school personnel will dispense any medication. It is your responsibility to deliver the proper form and the medication to your child's school.

The medication should be in its ORIGINAL container and be labeled with:

- Your child's name
- Date
- Dosage
- Name of the medication



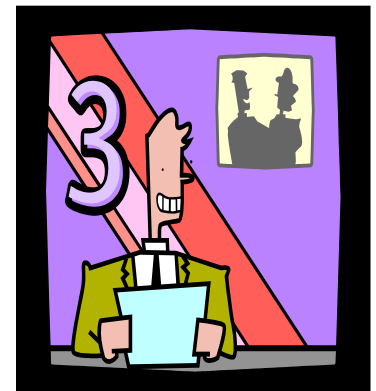
Please keep your child home if they have a fever, vomiting, diarrhea, or bad cough/cold symptoms. Students must be fever, vomit and diarrhea-free for 24 hours without the aid of medication to return to school!

Abuse/Neglect

Professional staff is required by law to report suspected instances of abuse or neglect. The threshold of suspicion is reached when a staff member notices physical injuries or marks on a child, the child brings injuries or marks to a staff member's attention, a third party reports concern, or the child tells a staff member something that warrants suspicion. The principal or his/her designee is required to conduct a preliminary investigation which may involve the principal or other personnel (nurse, social work) questioning and/or examining the child. The results of this investigation will determine if a report to Children Services is warranted. If the school feels that the child's welfare is at risk, the call will be made anonymously.

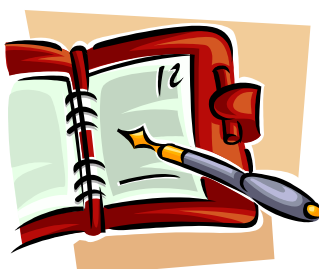
Release of Information

It is Ohio law that certain information concerning staff and students must be released if requested. This information is considered "Directory Information". "Directory Information" includes such things as name, address, telephone number, date of birth and dates of attendance, etc. If you do not want ANY information about your child released by the school, submit your request in writing to the school principal.



Occasionally we have activities in our school that are covered by the media. **If you do not want your child's name or photograph to be in the newspaper, website, on radio or television, please submit your request in writing or fill out a Media/Electronic Release Form available at the school office.**

Please note that video cameras and other recording devices may be used throughout the school year for instructional purposes and surveillance. These recordings will not be released to any public media or to any unauthorized persons.



Address and Telephone Changes

If a family's address and/or telephone number changes this information must be reported to the school as soon as possible. Up-to-date information allows for effective communication, especially in times of emergency. If your move is within Reynoldsburg, a "Change of Address Form" must be completed and turned into Central Registration along with proof of residency for the new address. If you intend to withdraw from Reynoldsburg City Schools due to a move to another city or state, notification to the school is imperative to ensure a smooth transition for the child. Pending time constraints, "Intent to Withdraw" papers should also be filled out and given to the Central Registration Department. Please check with the school office in all cases.

Academics

Our school has four nine-week grading periods. A progress report will be sent home approximately one week after the end of the grading period.

Rose Hill Elementary 9-Week Grading Schedule 2015-2016

	1 st 9-weeks	2 nd 9-weeks	3 rd 9-weeks	4 th 9-weeks
<i>Dates</i>	Aug. 17 – Oct.15	Oct.19 – Dec.18	Jan. 4-Mar.11	Mar.14 – May 26
<i>Interim Reports Due Electronically Posted</i>	Parents/Guardians may view their student's progress at any time throughout the year by accessing the PowerSchool Parent Portal. Look for information in the student welcome packet			
<i>Number of Days in Grading Period</i>	43	41	46	48

Total: 178 days

Periodic assessments of student progress will be made throughout the school year. You will receive information about these assessments and any other testing from your child's classroom teacher. Interim Reports are on PowerSchool Parent Portal. Parents will receive their PowerSchool Parent Portal access information in their welcome packet.

We encourage you to participate in Parent-Teacher Conferences. Calendar scheduled Parent-Teacher Conferences will be held twice during the school year. If the teacher or parent feels that a conference is needed at any other time, contact between the teacher and parent should be made to schedule a conference.

Parent/Teacher Conferences Days:

Thursday, October 22 and Wednesday, October 28, 2015
Thursday, February 4 and Wednesday, February 10, 2016

Parents may request to view their child's school records. Requests should be submitted to the school 24 hours in advance of the visitation. This request should be done in writing and given to the principal. Parents will need to provide proper identification prior to viewing student records.



Promotion, Placement, and Retention Procedures – Many factors are taken into consideration in the decision to retain, place, or promote a child. Teacher assessments, the child's progress, developmental age, psychological input, testing results, and concern for the effect of placement upon the well-being of the student will be considered. It is essential that early communication between the home and the school concerning academic progress take place. Please contact the classroom teacher or the principal if you have any questions about the retention, placement or promotion of your child.

Special Services - In addition to the regular curriculum, we are pleased to offer specialized services for students qualifying for Tier 2 or Tier 3 as well as classes for students with special academic ability and talents.

A Speech and Language Therapist is available to work with students who have speech and language disorders. The therapist checks all kindergarten students and other children who are referred by the classroom teachers. Parents will be kept informed of test results indicating a special need.

A School Psychologist and Social Worker are available to our school. They provide supportive help to teachers and parents in working with determining the best academic program for your child.

Each of our schools has a **Response to Intervention Team (RTI)**. The purpose of this team is to accept referrals made by parents or school personnel who have concerns about a student's academic performance, emotional, social or behavioral problems. The team consists of a group of teachers, social worker, administrators, parents and other appropriate school personnel.



Highly Qualified Teachers

The No Child Left Behind Act (NCLB) emphasizes the importance of teacher quality in improving student achievement and requires each State Educational Agency to develop and implement a plan to help local educational agencies within the state to ensure that public school teachers are highly qualified.

The Ohio Department of Education has verified that the teachers at Rose Hill Elementary School are highly qualified. If a parent/guardian would like to discuss the credentials of their child's teacher, please contact the principal.

Teacher Qualifications

In compliance with "No Child Left Behind" parents can check on the status of their child's teacher to see if they are highly qualified.

Conduct/Discipline Policy

It is essential that students conduct themselves appropriately while in school and at school functions. Students who conduct themselves appropriately learn better, make and keep friends easier, have better attendance, and are confident children.

At Rose Hill Elementary we have developed a building-wide behavior expectation policy called ROCK (Responsibility, Outstanding Effort, Community and Kindness). ROCK is a positively stated set of guidelines that focuses on student expectations while at school. Students who 'Rock It Out' are sticking to these expectations and *Living in Excellence*.

ROCK consists of four easy to remember concepts: Responsibility, Outstanding Effort, Community and Kindness. Students will be specifically taught to "Rock It Out" in all areas of the building (bus, hallways, classroom, bathrooms, cafeteria, playground, and assemblies). For each building area, there are several guidelines that fall into one or more of the four categories. While these guidelines cover the most important behaviors, they are not all inclusive. There may be many other behaviors that are not listed but that, nonetheless, are covered by ROCK. For example, ROCK does not specifically state that it is not OKAY to poke someone with a pencil; however, ROCK does say to require students to show kindness, and part of kindness is respecting other people's space. Additionally, students and classrooms will receive positive incentives for "Rocking It Out". ROCK will be reviewed and re-taught multiple times throughout the year. You will see signs in classrooms and around the building like the one below to remind students of ROCK and what it means to rock out in different areas.



Rose Hill Rockets



	Classroom	Hallway	Restroom	Cafeteria	Playground/ Indoor Recess	Assemblies	Bus
R Responsibility	<ul style="list-style-type: none"> - Take care of supplies and area - Raise your hand to talk - Be prepared - Arrive on time - Follow Directions - Keep hands and feet to yourself - Walk 	<ul style="list-style-type: none"> - Hands at your sides - Walking feet - Bubble in your mouth - Facing forward - Stay with your class 	<ul style="list-style-type: none"> - Use the bathroom and leave when finished - Flush - Walking feet - Clean up after yourself 	<ul style="list-style-type: none"> - Use quiet voices - Eat your own lunch - Use lunch items appropriately - Stay in your seat until you are dismissed - Walking feet 	<ul style="list-style-type: none"> - Use equipment appropriately - Follow adult directions - Stay on the playground at all times - Line up quickly when it is time to go inside 	<ul style="list-style-type: none"> - Sit flat on your bottom - Keep hands in your lap - Bubble in your mouth - Keep your body still 	<ul style="list-style-type: none"> - Stay in your seat - Sit flat on your bottom with your back against the seat - Quiet voice - Keep all body parts and other items inside the bus - Follow adult directions
O Outstanding Effort	<ul style="list-style-type: none"> - Always give your best effort - Ask and answer questions - Be on task - Be an active participant - Look for solutions to the problem 	<ul style="list-style-type: none"> - Stay in line - Stay quiet - Wait patiently before entering a room 	<ul style="list-style-type: none"> - Always wash your hands with soap and water - Keep water in the sink - Stay silent the whole time 	<ul style="list-style-type: none"> - Clean up your table and floor area when you leave - Eat a healthy lunch - Walk to recess 	<ul style="list-style-type: none"> - Walk on mulch and blacktop - Leave sticks, rocks, snow, ice, and other items alone 	<ul style="list-style-type: none"> - Raise your hand to ask and answer questions - Eyes on the speaker - Stay quiet - Stay in your seat 	<ul style="list-style-type: none"> - Use quiet voices - Stay seated the whole time until you get to your stop - Walk safely as you get off the bus
C Community	<ul style="list-style-type: none"> - Be an active listener - Wait to be called on to talk - Listen to others when talking - Help others when needed 	<ul style="list-style-type: none"> - Stay behind the person in front of you - Pick up trash - Set a good example 	<ul style="list-style-type: none"> - Respect other people's privacy - Set a good example 	<ul style="list-style-type: none"> - Throw away all your trash - Pick up any other trash you see 	<ul style="list-style-type: none"> - Include others - Make new friends - Share equipment 	<ul style="list-style-type: none"> - Be an active listener - Wait to be called on to talk 	<ul style="list-style-type: none"> - Listen to others when talking - Help others if needed
K Kindness	<ul style="list-style-type: none"> - Use a quiet voice - Give compliments to others - Encourage others 	<ul style="list-style-type: none"> - Give friendly reminders of expectations - Use manners 	<ul style="list-style-type: none"> - Wait your turn - Use kind words - Use manners 	<ul style="list-style-type: none"> - Use kind words - Use manners - Wait your turn 	<ul style="list-style-type: none"> - Use kind words - Be a good sport - Wait your turn 	<ul style="list-style-type: none"> - Clap politely after someone finishes speaking - Thank visitors for coming 	<ul style="list-style-type: none"> - Use kind words - Stay in your own space - Wait your turn to leave your seat

Student Rights

All students have the right:

- ◆ to learn in a positive and safe environment
- ◆ to be treated fairly and not be discriminated against
- ◆ to be informed about school rules and expectations

School Wide Positive Behavior Incentive Supports

Daily	Reward Time from Level System Outstanding Orange-Teacher Treasure Box Perfect Purple-Principal Treasure Chest
Weekly At Morning Blast Off	Shooting Star Classroom Incentive (Monday Drawing at Morning Blast Off) Awesome Astronaut Ticket Drawing per grade level (Tuesday and Thursday at Morning Blast Off) Community Recognition Award (Fridays) Attendance Recognition Award by Class with the Highest Percentage of Perfect Attendance on (Mondays)
Monthly	Attendance Recognition Raffle School Wide Assembly: Identify students who demonstrate the character word of the month
Quarterly	Level System Rewards Party (Bounce House) Academic Awards Given During School Wide Assembly

No student has the right to disrupt the learning of others.

Student Responsibilities

All students have the responsibility:

- ◆ to know and follow the rules and expectations
- ◆ to respect the dignity and value of themselves, other students, and staff
- ◆ to respect the authority of school staff including teachers, administrators, and others who are authorized in helping to maintain discipline
- ◆ to behave in a way that is safe to self and others and does not disrupt the learning of self and others
- ◆ to learn to handle problems and conflicts by problem-solving in ways that are respectful and safe.

While the expectations are made very clear to students, there will be times when students fail to meet ROCK's expectations. In these instances, there will be corrective instruction for those who fail to rock it out. There are many possibilities for correcting student behavior. This depends on the student's needs and history of conduct, the seriousness of the specific infraction, and the number of infractions occurring at once.

General Infraction Guidelines and Disciplinary Actions

The following guidelines give possible infractions along with definitions. They are divided into three categories: Minor Infractions, Major Infractions, and Severe Infractions. Please note that some behaviors may fall into one or more categories depending on frequency, severity, intent, and result of the behavior. This is not an all inclusive list of misconduct but covers many of the main areas which may lead to disciplinary action.

Minor Infractions: First-time offenses OR minor misconduct

Major Infractions: Repeated minor infractions OR serious offenses

Severe Infractions: Repeated minor/major infraction, illegal, OR life or health-threatening offenses

Minor Infractions

Disruptive Behavior:	Any behavior which disrupts the learning of others (including talking out, making noises, playing around, refusal to cooperate with others, giving put downs to others, etc.)
Profanity:	Swearing, cursing, or making obscene gestures (also written).
Minor Insubordination:	Noncompliance with a request, direction, or instruction of an adult. Also includes inappropriate tone or attitude toward adults.
Cheating/Plagiarism:	Using or getting information dishonestly. Presenting the ideas or work of others as your own.
Inappropriate use of Internet or Computers:	Any act that violates the RCS Acceptable Use Policy. Using for personal reasons. Using the network to personally attack or harass another person. Going to or attempting to go to unauthorized or inappropriate sites.
Electronic Devices:	Having and/or using electronic devices during school hours. Includes handheld games, music devices, phones, and other electronics not specifically approved by the school for educational purposes. Student cell phones must be turned off

	and not kept on the student's person at any time during the day. (The school, the district, and its staff shall not assume responsibility for devices that are damaged, lost, or stolen when brought to school or after being confiscated for violation of this policy)
--	---

Major Infractions

Gross Insubordination:	The blatant, public, and disruptive refusal to follow the request, direction or instruction of an adult. All other misconduct not addressed in another category.
Assault:	A one-way physical attack on another person such as hitting, kicking, biting, spit, shoving or otherwise causing physical pain or harm.
Fighting:	A two-way physical conflict.
Bullying: Harassment / Intimidation / Threats / Coercion	Any act verbal or written (note, drawing), gesture or other form of communication through technology that is used to intimidate, harass, or threaten harm to another person for any reason. Bullying is any of these acts including physical acts that a student exhibits toward another particular student more than once and the behavior both: A) Causes mental or physical harm to the other student ; and B) Is sufficiently severe, persistent, or pervasive that it creates an intimidating, threatening, or abusive educational environment for the other student.
Vandalism:	The intentional damage or destruction of another's property.
Theft:	Taking or helping to take someone else's property without permission.
Sexual Misconduct:	The unacceptable touching of or making reference to the private body parts of another person verbally or in writing (including pictures, drawings, emails, text messages, any form of technology, etc.).
School Bus/Vehicle Disruption:	Conduct not listed elsewhere that obstructs the orderly and safe operation of school buses/vehicles

Severe Infractions

Drug possession, use, sale:	Having, buying, selling or being under the influence of alcohol or illegal drugs. This also applies to look alike substances or any substance that a student claims is a drug.
Weapon:	Possession, transmission, or use of any kind of weapon including firearm, knife, razor, mace, pepper spray, clubs, chain, look-alikes, home-made weapons, or any item that is used like a weapon.

Corrective Intervention Strategies

School personnel will use intervention strategies to help students replace negative or unwanted behavior with more positive behavior in order to keep the school safe and increase the likelihood that students will improve achievement.

Strategy	Description	Used For:
Parent Contact	Includes written contact (notes, email, communication logs, Think Tank and Office Referral pink slips), verbal contact (phone conversation or left message), or face-to-face meeting.	Minor, Major, Severe
Loss of Privilege	Loss of non-guaranteed privileges such as recess, class celebration, assembly, reward, etc.	Minor, Major, Severe
Re-teaching	Re-teaching of the desired behavior.	Minor, Major, Severe
Before or After School Detention	School personnel will contact parents to determine date and time for detention.	Minor, Major, Severe
Behavioral Contract	A contract between teacher and student which includes the desired behaviors, incentives, consequences, and teacher or self monitoring.	Minor, Major
Referral to School Resource Personnel	Student may be referred to Guidance Counselor, Social Worker, or Response To Intervention team for classes, small group intervention, or consideration for behavior plan.	Major, Severe
Functional Behavioral Assessment and Behavioral Intervention Plan	A meeting will take place to determine the function that the negative behavior is serving, what the antecedents to the behavior are, and what the replacement behavior will be. Then a Behavior Intervention Plan will be developed to encourage the desired behavior while discouraging the undesired behavior. These plans are generally more restrictive than a contract and data is collected during the implementation of the plan to help in determining whether adjustment of the plan is needed or whether the behavior requires a deeper reaching plan.	Major, Severe
Emergency Removal	Following an infraction, if it is determined by the Principal that a student cannot be returned to class, the student will be removed for a period of not more than 24 hours. The student will have to be picked up from school by a parent, guardian, or their approved designee.	Major
In-School Suspension	The student will be kept in school but assigned to an alternate location from his/her normal classroom. The student will be given work to do, will eat lunch separated from peers and will not attend recess or other functions happening at school. ISS is at the Principal's discretion and will not be used for infractions	Major

	of violence.	
Out-of-School Suspension	The student will be removed from school for a period of 1-10 days (discretion of the Principal). During the period of the suspension, the student will not be permitted on school property, on any school bus/vehicle, or be in attendance at any school/district sponsored functions. Students may be able to make up work as appropriate.	Major, Severe
Expulsion	Removal of the student from school for a period of 11-85 school days.	Major, Severe

Field Trips & Assemblies

Each year we try to give our students the opportunity to participate in a variety of field trips and assemblies.

At all special events, students are expected to be on their best behavior. At assemblies, students will sit in areas designated by school staff. Inappropriate talking, noises, or remarks will not be tolerated. Assemblies and field trips are privileges. Students who do not demonstrate appropriate behavior may be excluded from field trips and assemblies.

REYNOLDSBURG SCHOOLS DRESS CODE POLICY

In order to promote school safety and provide a healthy and respectful educational environment, all students in grades kindergarten through four shall adhere to this dress code policy.

The objective of this dress code is to provide an appropriate, safe and respectful educational environment while allowing students to dress comfortably, within limits, to facilitate learning.

The District expects students to maintain the type of appearance that is not distracting to students, teachers or the educational process of the schools. The final determination of a student's adherence to the dress code will be made by the school administration.

PARENTS SHARE EQUAL RESPONSIBILITY WITH THEIR CHILD FOR THE STUDENT'S ADHERENCE TO THE DRESS CODE.

GENERAL GUIDELINES

1. No clothing that promotes drugs, alcohol, tobacco, sex, violence or is offensive or degrading.
2. No clothing associated with gangs.
3. No clothing that exposes underwear or inappropriate parts of the body.

4. No clothing long enough to drag the ground.
5. No top and bottom clothing that does not overlap.
6. No body piercing, except for ears.
7. No sunglasses unless prescribed in writing by a medical doctor for indoor wear.
8. No chain wallets.
9. No flip-flops, house shoes, or slippers.

BOTTOMS

- No clothing that is more than one inch larger or smaller than waist measurement.
(If necessary, a belt must be worn to hold the bottoms in place around the waist).
- No pajama pants.
- Skirts, shorts or skorts at or below finger length.

TOPS

- No sleeveless tops.
- No formfitting or oversize baggy shirts.
- No low-cut, scoop or plunging necklines.
- No fabrics so sheer as to allow underwear and/or inappropriate parts of the body to be visible.
- No clothing with hoods to be worn inside the building.
- No coats or cold weather jackets worn inside the school during the school day.



HEAD COVERINGS

- No hats, caps, scarves or headbands.
- No head coverings except for religious purposes. The student (and if under the age of 18, the parent of the student) is to notify the school authorities of the religious practice prior to the start of the school year to prevent the students from being questioned about the attire.



DRESS CODE VIOLATIONS

Students who violate the Dress Code shall be subject to the following disciplinary actions:

1. A warning will be issued and the student's parents/guardians shall be required to pick up a student or bring alternative clothing for the student to wear.
2. Class time missed due to a violation of this policy will be marked as unexcused.
3. Repeated violations will result in other disciplinary action pursuant to the Student Code of Conduct, which may include, but not be limited to, detention, suspension, and/or expulsion.
4. Building administrators will make the final decision at the building level if a student's attire is inappropriate or does not meet the requirements of this policy.

Adoption date: July 19, 2012
Reynoldsburg City School District

At Rose Hill School, students are NOT allowed to wear shoes with wheels or summer sandals without a back strap.



Thank you

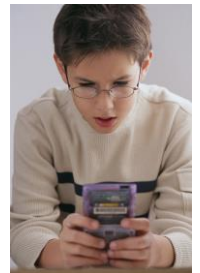
Book Bags

Book bags having wheels (like luggage) will not be permitted to be pulled around through the school building. These book bags will have to be carried while students are inside the building, but may be pulled around outside the school building.



Cell Phones, Electronic Devices and Toys

Personal/portable electronic devices and toys are not permitted at school.



If a parent believes that their child needs to carry a cell phone for safety reasons as they travel to and from school the **“Cell Phone Policy Form”** must be filled out by the parent/guardian and returned to the school office/teacher. When the form is received and approved, the child may bring the cell phone to school. However, once they are on school grounds, the cell phone must be turned off, put away (not on the student) and not used during school hours. If emergencies arise during the school day, the school will contact the parent. If a child feels that they need to contact their parent during school hours, they must request permission from the teacher to do so and use a school phone to make the call. Likewise, if the parent needs to contact the school or speak with their child in the event of an emergency during school hours, they will need to call the school’s main line at 614-367-2380.

Any violation of this policy will result in the confiscation of the device. The district, the school and its staff shall not assume responsibility for devices that are damaged, lost, or stolen when brought to school or after being confiscated for violation of this policy. The “Cell Phone Policy Form” is available online or from the school office.

Playground Safety

ROCK Guidelines for Success on the Playground

1. Use kind words and tone of voice.
2. Play only approved playground games by the rules.
3. Use equipment the way it was intended to be used.
4. Walk on the mulch and blacktop areas.
5. Leave sticks, rocks, snow, and other items alone.
6. Stay on the playground at all times unless given permission by staff.
7. Follow adult directions and requests.

Recess is a privilege that students have; it is a time to burn off some energy and get a break in a day filled with work and concentration. Recess is not a guaranteed right, and it can be revoked for those who cannot Rock It Out during recess. The playground code will be specifically taught and instruction will be provided for the playground areas, equipment, and games. Additionally, the staff will periodically review the playground code with all students and may do so more frequently with those who may need it. Only school playground equipment will be allowed on the playground. Students will not be permitted to bring their own jump ropes and balls from home.

There will be supervision on the playground at all times. Playground duty teachers have the full authority of the principal to:

- ◆ close a game or piece of equipment for any period of time (including permanently)
- ◆ restrict certain individuals' access to certain aspects of recess
- ◆ assign students to recess time out for part or all of recess.

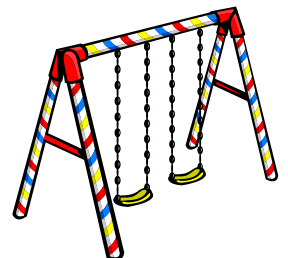
Boundaries

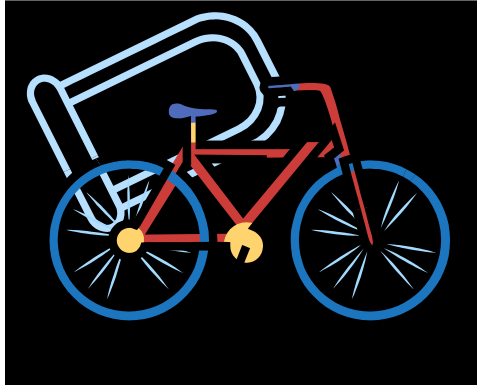
- North - swing and eagle's nest
- South - sidewalk
- East - green cable box (middle of jogging path)
- West – sidewalk

The duty teachers' first responsibility is to monitor activity for dangerous circumstances. Accidents will invariably happen—teachers cannot make students make the right choices, but they can address misconduct through any corrective intervention strategy necessary. In case of minor altercations, duty teachers may instruct students to play apart from each other or remove them to recess time out. Non-emergency issues will be addressed at a later time.

Things to Remember

- Soccer may only be played in the field.
- Stay off of the tops of the equipment.
- Go up only on all ladders - down on all poles.
- Dismount from platforms safely (do not jump down).
- Remain seated on swings at all time and swing front to back only.
- Remain upright and keep moving at all times on the Eagle's Nest.
- Footballs may be passed only from one person to another.
- Benches are for sitting.
- Walk around not through a game in progress.
- All playground equipment should be used in the manner for which it was intended.
- Feet first and bottoms on slides





BICYCLES

Students may ride bicycles to and from school. Bicycle riders are required to abide by the laws as those governing cars and other vehicles (safety helmets preferred). Any misuse of a bicycle will result in the revocation of the bicycle riding privilege.

All bicycles must be walked on school property.

They are to be parked and locked in the racks provided. Skates, rollerblades, scooters or

skateboards of any kind are not permitted.

TRAFFIC SAFETY

Buses and Daycare Vehicles



The main loop by the front door is for school buses and daycare vehicles only. Only daycare vehicles that have been approved by the office and that have the 'Approved Daycare' sign displayed in the passenger side window are allowed into the loop. The bus loop is closed to all vehicles except buses from 7:35 a.m.–8:35 a.m. and 2:15 p.m.–3:15 p.m.

Students Being Picked Up by Parents/Guardians

There are two (2) options for those parents/guardians who wish to pick their children up at school at the end of the day.

1) Parent Loop

Anyone one wishing to utilize the Parent Loop must observe the following guidelines:

- ◆ The student's name must be displayed on an official Rose Hill pick up card in the front seat driver's window (do not put the sign on the dashboard or front windshield).
- ◆ **Any vehicle in the parent loop without the official Rose Hill pick up card will be directed to park in a designated parking space, and the parent/guardian must come in to pick up their child.**
- ◆ Drivers will pull their vehicle to the assigned numbered cone.
- ◆ Treat all Rose Hill staff courteously and respectfully while picking up your child. Disrespect or abuse of Rose Hill staff will result in loss of parent loop privilege.

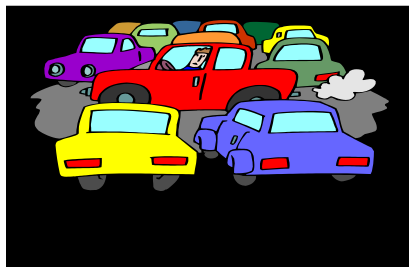
2) Park and Walk In

If you do not wish to wait in the line, you may park in any designated parking space and walk in to pick up your child.

IMPORTANT – Pick-up and drop-off procedures are subject to change at anytime depending on circumstances or need.

While driving on school property, please observe all signs, traffic patterns, and restricted areas. There may be times when Rose Hill staff direct you to do something contrary to signage—please follow the staff directions at these times. Drive slowly while on school property and always be alert for small children and pedestrians.

There is normally sufficient parking in the school lot. In the event this is full, parking is also permitted at the Reynoldsburg Alliance Church across the street. Additional parking is also available on Roundelay Road behind the school. Please be sure to observe the parking restriction signs posted on either side of the crosswalk and follow the traffic arrow pattern.



Always park your vehicle in a designated parking space only. Please remember to drive carefully through all areas of the parking lot. **Children are not always watching for you. Please watch for them!**

RULES AND REGULATIONS FOR

ALL BUS RIDERS

This includes riders to/from school and field trips

BEFORE THE BUS ARRIVES:

1. Leave home on time each day.
2. Walk facing traffic if there are no sidewalks.
3. ***Arrive at your regular pick-up spot five minutes before the bus pickup time.***
4. Wait off the roadway, not in the street.
5. Stay off lawns, and avoid horseplay, scuffling, and fighting.



BOARDING THE BUS:

1. Wait for the bus to come to a full stop.
2. Be polite and take your turn getting on the bus.
3. Use the handrail.

CONDUCT ON THE BUS:

1. Follow the directions of the driver, including seat assignment, if given.
2. Walk to your seat and remain there. Do not stand or move around while the bus is moving. No one is permitted to save a seat for another.
3. Sit three to a seat, if necessary, and be careful not to block aisles.
4. Do not talk to the bus driver unless it is an emergency. (Drivers need to keep their minds on driving and their eyes on the road).
5. Talk quietly so that the driver can hear traffic sounds.
6. Keep arms, feet, book bags, and school books out of the aisles.
7. Do not open or close windows, except when requested by the driver.
8. Keep hands and head inside the bus. Do not stick anything out of the windows or throw anything out of the bus.
9. Loud, profane language and yelling are not permitted.
10. Eating is not permitted on the bus.
11. Smoking is not permitted on the bus. Do not light matches or lighters on the bus.
12. Do not deface or litter the bus; use waste baskets.
13. Do not tamper with the safety device or any other equipment.

LEAVING THE BUS:

1. Get off only at your assigned stop and go directly home.
2. Do not leave your seat until the bus comes to a full stop.
3. Take your turn; do not crowd in front of others.
4. Use the handrails and watch your step.
5. Look both ways, and check for turning cars before you cross the street.
Cross on signal by the bus driver.

IN CASES OF EMERGENCY OR WHEN THE DRIVER MUST LEAVE THE BUS:

1. Stay seated and remain quiet.
2. Do not touch emergency equipment.
3. Depend on the driver's training to take care of the situation.
4. Be ready to follow the instructions of the driver or police officer.

NOTE: Violation of the above rules and regulations may result in suspension of transportation.

ALL Students must have completed paperwork filed with the Transportation Department prior to boarding any bus.

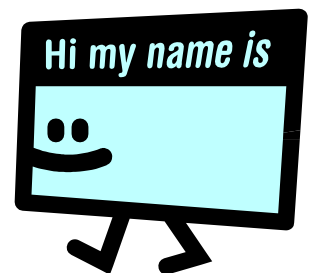
Theresa Ritchie

**Reynoldsburg City Schools Transportation Department
7932 E. Main Street
Phone: 614-501-1041
Cliff, Director**



Volunteers

Volunteers in our school provide an invaluable service to our students and staff members. We have many school activities that rely upon the services provided by volunteers. We appreciate the role of volunteers in



our schools and encourage you to contact the principal or your child's teacher if you are available to help in any way.

Adults who volunteer in the school need to pick up, review and complete the volunteer packet. In some instances, a criminal background check will need to be done before a volunteer can begin.

There are certain circumstances for which a volunteer may need to be fingerprinted. The following scenarios will require fingerprinting/criminal background checks:

- Any parent volunteer that has “unsupervised access to students” will need to be fingerprinted (i.e. one-on-one mentoring/reading; field trips in which a volunteer takes students in a small group unsupervised by district personnel.).
- Any parent volunteer handling PIE (Partners in Education) or school district funds.

Fingerprinting Approvals are good for FIVE YEARS! *Please note: fingerprinting results may take up to six weeks to return.* The school administration will be able to facilitate a criminal background check if it is needed.

Fingerprinting Hours for Volunteers

Reynoldsburg City Schools, 7244 E. Main Street

Phone: (614) 501-1020

Please call the number listed above prior to your visit to inquire about days and times.



Rose Hill PIE (Partners In Education)

Our school has a Parent/Teacher Organization. The PIE (Partners In Education) is very active in working to bring special activities such as classroom parties, school newsletters, scholarship program, fundraiser programs and volunteer aide program for our students. The PTO will be sending information home with your child. If you don't receive this packet, please contact the school office.

Any questions about the PTO, please contact a member of the Executive Board

2015-2016 Executive Board Members

President	Sabrina Gray
Vice-President	TBA
Treasurer	TBA
Secretary	TBA

Additional Services Available at Our School

This is a brief listing of some of the additional services that we provide for our students.

1. A **Lost and Found** is located in our building. Please contact the office staff if your student is missing an item. We encourage parents to label all items that your child brings to school. The lost and found is located outside the gym. If items are not claimed, they will be donated to a charitable organization at the end of each semester.
2. The **School Library** is available to all students. Students are encouraged to utilize the school library and to take books home to read.
3. **School Insurance Forms** are available at the school office each school year. If you decide to purchase the insurance, please send the form and payment as indicated on the insurance application.
4. **Building Usage** – Some of our school facilities are available for private use. If you wish to use a school facility for an activity, please contact the school office for a building usage form. There is a nominal charge for the use of a school facility.
5. **Use of School Telephone** - Due to the importance of keeping our phone lines as open as much as possible, we do not make our phones available for public use. If an emergency exists, the student will be allowed to use the phone with the special permission of teacher and/or office personnel. Students are not to use cell phones to call home. They must get permission to use the school phone.
6. **Forgotten Items** – If your child has forgotten an item that will be needed during the school day, you can **bring that item to the school office** and the school personnel will deliver the item to the child. This will help to avoid any disruptions to classroom activities.

Rose Hill Elementary School

Home/School Compact for Student Learning

The Rose Hill Elementary learning communities of teachers, support staff, administrators, and families have written this compact to outline how we share responsibility for student learning and academic achievement. This compact describes how the school and families will build a partnership that will help children achieve Reynoldsburg School's and Ohio's high standards.



This school-parent compact is in effect for school year 2014-2015.

Our School's Responsibilities

Rose Hill administrators, teachers and support staff will:

1. Provide high-quality curriculum and instruction in a supportive and effective learning environment that enables children to meet the State's student academic achievement standards as follows:
 - Provide targeted academic and behavioral supports to students ensuring all subgroups of students meet their learning targets
 - Ensure a safe environment conducive to learning
 - Progress monitoring with formative assessments are used for all students to ensure all students make at least a year's growth in Reading and Math. Curriculum is aligned to Ohio Academic Content Standards
 - Enrichment activities are provided to enhance and support higher level learning
2. Hold parent-teacher conferences twice a year during which this compact will be discussed as it relates to the individual child's achievement. Parents and teachers may also schedule conferences as needed throughout the school year.
3. Provide parents with frequent reports on their children's progress. Specifically, the school will provide reports as follows:
 - Interim Reports are electronically accessible for parents to review four times a year, mid-quarter. Parents are invited to ask questions about their child's report.
 - Report cards are sent home quarterly. Parents are invited to contact their child's teacher with questions.
4. Provide parents reasonable access to staff. Specifically, staff will be available for consultation with parents as follows:
 - Phone and voicemail
 - E-mail
 - Written notes in child's Agenda (daily assignment log)
 - Two scheduled conferences a year and additional conferences as requested by the parent or teacher.
5. Provide parents opportunities to support their child's education and the education of all Rose Hill students by participating in Rose Hill Elementary as follows:
 - Join children for lunch
 - Chaperone field trips
 - Observe classrooms
 - Serving on the PIE (Partners In Education)
 - Volunteering as a tutor, mentor or activity leader

- Assist in an area of the school such as our children’s classroom, library, playground or cafeteria
- Attend school events such as Open House, performances, field day, etc.
- Help to review Title I plans and compacts
- Participate on Reynoldsburg City Schools District committees
 - Reynoldsburg City Schools requires that all school volunteers who have individual contact with students must be fingerprinted and have a background check. This is done free of charge by Reynoldsburg City Schools.

Family Responsibilities

Rose Hill families will support our children’s learning in the following ways:

- Ensuring our children attend school if at all possible and come to school on time.
- Reading and signing student agendas daily.
- Helping our children complete their homework to the best of their ability by:
 - Encouraging our children to do their best work
 - Helping our children understand directions for assignments
 - Talking with our children about learning and school in a positive way
 - Notifying the teacher when our child has difficulty completing homework assignments.
- Attending our children’s parent-teacher conferences and other meetings pertaining to our children.
- Monitoring amount of television and the types of television programs our children watch and music they listen to.
- Participating, as appropriate, in decisions relating to our children’s education.
- Promoting positive use of our child’s time at home and in the community.
- Staying informed about our child’s education and communicating with the school by promptly reading all notices from the school or the school district either received by my child or by mail and responding, as appropriate.

Rose Hill families will participate in our school to the extent possible by:

- Serving on the PIE (Partners In Education)
- Volunteering as a tutor, mentor or activity leader
- Assisting in an area of the school such as our children’s classrooms, library, play ground or cafeteria
- Advocating for our children
- Attending school events such as Open House, performances, field day, etc.
- Helping to review Title I plans and compacts
- Participating on Reynoldsburg City Schools District committees

Student Responsibilities

Students will share the responsibility to improve our academic achievement and achieve the state’s high standards. Specifically, we will:

- Do our homework when assigned and ask for help when we need to.
- Read every day outside of school time.
- Give to our parents or the adult who is responsible for our welfare all notices and information received by us from our school every day
- Ask for help when we need it
- Help to make my classroom a positive and safe place to learn.

- Give my best effort.
- Living In Excellence

Reynoldsburg “Compact on Respect”

As a member of the Reynoldsburg community, I will show my strength by...

- greeting others I meet with acts of friendliness and kindness,
- taking responsibility for my own actions and how they affect the people and environment around me,
- being truthful and honest to myself and others in all that I say and do as a sign of respect for myself and others,
- treating all persons in ways that I would like them to treat me,
- and recognizing that each person is different and has an individual contribution to make to the community.

With your cooperation, the "Compact" will be a positive influence on the quality of life in Reynoldsburg.



Reynoldsburg Board of Education Members

You may contact the members of the Reynoldsburg Board of Education by calling the Administrative Offices of Reynoldsburg City Schools at (614) 501-1020. Written correspondence to the Board of Education members may be mailed to the Administrative Offices at 7244 E. Main Street, Reynoldsburg, Ohio, 43068.

Reynoldsburg Board of Education

Dan Hayes

Elaine Tornero

Joe Begeny

Ryan Brzezinski

Sandra Long

The regular meetings of the Reynoldsburg Board of Education are held on the third Tuesday of every month at the Reynoldsburg City Hall at 7:00 p.m. Notice of any change of location and time will appear in the local newspapers.

Board Policies

- Computer/On-Line Services
- Family Education Rights and Privacy Act (FERPA)
- Harassment, Intimidation, and Bullying

Please review the following policies included in this handbook.

[File: EDE](#)

Computer/On-Line Services

(Acceptable Use and Internet Safety)



Technology can greatly enhance the instructional program, as well as the efficiency of the District. The Board recognizes that careful planning is essential to ensure the successful, equitable and cost-effective implementation of technology-based materials, equipment, systems and networks. Computers and use of the District network or on-line services support learning and enhance instruction, as well as assist in administration. Computer networks allow people to interact with many computers; the Internet allows people to interact with hundreds of thousands of networks. All computers are to be used in a responsible, efficient, ethical and legal manner. Failure to adhere to this policy and the guidelines below will result in the revocation of the user's access privilege. Unacceptable uses of the computer/network include but are not limited to:

1. violating the conditions of Federal and State laws dealing with students' and employees' rights of privacy;
2. using profanity, obscenity or other language which may be offensive to another user;
3. reposting (forwarding) personal communication without the author's prior consent;
4. copying commercial software and/or other material in violation of copyright law;
5. using the network for financial gain for commercial activity or for any illegal activity;
6. "hacking" or gaining unauthorized access to other computers or computer systems, or attempting to gain such unauthorized access;
7. accessing an/or viewing inappropriate material an
8. downloading of freeware or shareware programs.

The Superintendent/designee shall develop a plan to address the short- and long-term technology needs and provide for compatibility of resources among school sites, and offices and other operations. As a basis for this plan, he/she shall examine and compare the costs and benefits of various resources and shall identify the blend of technologies and level of service necessary to support the instructional program.

Because access to on-line services provides connections to other computer systems located all over the world, users (and parents of users who are under 18 years old) must understand that neither the school

nor the District can control the content of the information available on these systems. Some of the information available is controversial and sometimes offensive.

The Board does not condone the use of such materials. Employees, students, and parents of students must be aware that the privileges to access on-line services are withdrawn from users who do not respect the rights of others or who do not follow the rules and regulations established. A user's agreement is signed to indicate the user's acknowledgment of risks and regulations for computer/on-line services use. The District implemented technology-blocking measures to prevent students from accessing inappropriate material on school computers. The District has also purchased monitoring devices which maintain a running log of Internet activity, recording which sites a particular user has visited.

"Harmful to minors" is defined as any picture, image, graphic image file or other visual depiction that:

1. taken as a whole and with respect to minors appeals to a prurient interest in nudity, sex or excretion:
2. depicts, describes or represents, in a patently offensive way with respect to what is suitable for minors, an actual or simulated sexual act or sexual contact, actual or simulated normal or perverted sexual acts, or lewd exhibition of genital or
3. taken as a whole, lacks serious literary, artistic, political or scientific value as to minors.

Annually, a student who wishes to have computer network and Internet access during the school year must read the acceptable use and Internet safety policy and submit a properly signed agreement form. Students and staff are asked to sign a new agreement each year after reviewing the policies and regulations of the District.

[Adoption date: January 21, 2003]

LEGAL REF.: U.S. Const. Art. I, Section 8
Family Education Rights and Privacy Act; 20 USC 1232g et seq.
ORC 1329.54-1329.67
3313.20
3319.321

CROSS REFS.: AC, Nondiscrimination
ACA, Nondiscrimination on the Basis of Sex
ACAA, Sexual Harassment
JFC, Student Conduct



Notification of Rights Under The **FAMILY EDUCATIONAL RIGHTS AND PRIVACY ACT (FERPA)**

The Family Educational Rights and Privacy Act (FERPA) affords parents and students over 18 years of age (“eligible students”) certain rights with respect to the student’s educational records. These rights include:

1. **The right to inspect and review the student’s education records within 45 days of the District’s receipt of a request for access.** Parents or eligible students should submit to the building principal a written request that identifies the record(s) they wish to inspect. The principal will make arrangements for access and notify the parent or eligible student of the time and place where the records may be inspected.
2. **The right to request the amendment of the student’s education records that the parent or eligible student believes is inaccurate, misleading, or otherwise in violation of the student’s privacy rights.** Parents or eligible students may ask the Reynoldsburg City School District (“the District”) to amend a record that they believe is inaccurate, misleading, or otherwise in violation of the student’s privacy rights. They should write the building principal , clearly identify the part of the record they want changed, and specify why it is inaccurate, misleading, or otherwise in violation of the student’s privacy rights.

If the District decides not to amend the record as requested by the parent or eligible student, the District will notify the parent or eligible student of the decision and advise them of their right to a hearing regarding the request for an amendment. Additional information regarding the hearing procedures will be provided to the parent or eligible student when notified of the right to a hearing.

3. **The right to consent to disclosures of personally identifiable information contained in the student’s education records, except to the extent FERPA authorizes disclosure without consent.** One exception that permits disclosure without consent is disclosure to school officials with legitimate educational interests. A school official is:
 1. a person duly elected to the Board;
 2. a person certificated by the State and appointed by the Board to an administrative or supervisory position;
 3. a person certificated by the State and under contract to the

- Board as an instructor;
4. a person employed by the Board as a support staff member (including, but not limited to, health, medical, and law enforcement personnel);
 5. a person employed by the Board as a temporary substitute for administrative, supervisory or teaching personnel for the period of his/her performance as a substitute;
 6. a person or company with whom the Board has contracted to perform special tasks or provide educational services (including an attorney, auditor, consultant, or therapist); or
 7. a parent or student serving on an official committee, such a disciplinary or grievance committee, or assisting another school official in performing his or her tasks.

A school official has a legitimate educational interest if the official needs to review an education record in order to fulfill his or her professional responsibility including:

1. perform an administrative task required in the school employee's position description approved by the Board;
2. perform a supervisory or instructional task directly related to the student's education; or
3. perform a service or benefit for the student or the student's family such as health care, counseling, student job placement or student financial aid.

Upon request, the District discloses education records without consent to officials of another school in which a student seeks or intends to enroll.

4. **Student Privacy Interests in Surveillance Videos.** Occasionally requests from parents and other members of the public may want to review surveillance videos. These videos are educational videos that contain personally identifiable information about students that cannot be disclosed to third parties without the consent of the parents of every student on the video.
5. **The right to file a complaint with the U.S. Department of Education concerning alleged failures by the District to comply with the requirements of FERPA.** The name and address of the office that administers FERPA is:



HARASSMENT, INTIMIDATION, AND BULLYING

HAZING AND BULLYING (Harassment, Intimidation and Dating Violence)

The prohibition against hazing, dating violence, harassment, intimidation or bullying is publicized in student handbooks and in the publications that set the standard of conduct for schools and students in the District. In addition, information regarding the policy is incorporated into employee handbooks and training materials.

School Personnel Responsibilities and Complaint Procedures

Hazing, bullying behavior and/or dating violence by any student/school personnel in the District is strictly prohibited, and such conduct may result in disciplinary action, up to and including suspension and/or expulsion from school. Hazing bullying and/or dating violence means any intentional written, verbal, graphic or physical acts, including electronically transmitted acts, either overt or covert, by a student or group of students toward other students/school personnel with the intent to haze, harass, intimidate, injure, threaten, ridicule or humiliate. Such behaviors are prohibited on or immediately adjacent to school grounds, at any school-sponsored activity; in any District publication; through the use of any District-owned or operated communication tools, including but not limited to District e-mail accounts and/or computers; on school-provided transportation or at any official school bus stop.

Hazing, bullying and/or dating violence can include many different behaviors. Examples of conduct that could constitute prohibited behaviors include, but are not limited to:

1. physical violence and/or attacks;
2. threats, taunts and intimidation through words and/or gestures;
3. extortion, damage or stealing of money and/or possessions;
4. exclusion from the peer group or spreading rumors;
5. repetitive and hostile behavior with the intent to harm others through the use of information and communication technologies and other web-based/online sites (also known as “cyber bullying”), such as the following:
 - A. posting slurs on web sites, social networking sites, blogs or personal online journals;
 - B. sending abusive or threatening e-mails, web site postings or comments and instant messages;

C. using camera phones to take embarrassing photographs or videos of students and/or distributing or posting the photos or videos online and

D. using web sites, social networking sites, blogs or personal online journals, e-mails or instant messages to circulate gossip and rumors to other students.

6. excluding others from an online group by falsely reporting them for inappropriate language to Internet service providers.

In evaluating whether conduct constitutes hazing or bullying, special attention is paid to the words chosen or the actions taken, whether such conduct occurred in front of others or was communicated to others, how the perpetrator interacted with the victim and the motivation, either admitted or appropriately inferred.

Teachers and Other School Staff

Teachers and other school staff/volunteers who witness acts of hazing, bullying and/or dating violence as defined above, promptly notify the building principal/designee of the event observed, and promptly file a written incident report concerning the events witnessed.

Teachers and other school staff/volunteers who receive reports of suspected hazing, bullying and/or dating violence promptly notify the building principal/designee of such report(s). If the report is a formal, written complaint, the complaint is forwarded to the building principal/designee no later than the next school day. If the report is an informal complaint that is received by a teacher or other professional employee, he/she prepares a written report of the informal complaint that is forwarded to the building principal/designee no later than the next school day.

Complaints

1. Formal Complaints

Students, parents or guardians and school personnel may file reports regarding suspected hazing, harassment, intimidation, bullying and/or dating violence. The reports should be written. Such written reports must be reasonably specific including person(s) involved; number of times and places of the alleged conduct; the target of suspected harassment, intimidation and/or bullying and the names of any potential student or staff witnesses. Such reports may be filed with any school staff member or administrator. They are promptly forwarded to the building principal/designee for review and action.

2. Informal Complaints

Students, parents or guardians and school personnel may make informal complaints of conduct that they consider to be harassment, intimidation and/or bullying by verbal

report to a teacher, school administrator or other school personnel. Such informal complaints must be reasonably specific as to the actions giving rise to the suspicion of hazing, harassment, intimidation and/or bullying, including person(s) involved, number of times and places of the alleged conduct, the target of the prohibited behavior(s) and the names of any potential student or staff witness. The school staff member or administrator who receives the informal complaint promptly documents the complaint in writing, including the above information. This written report by the school staff member and/or administrator is promptly forwarded to the building principal/designee for review and action.

3. Anonymous Complaints

Students, parents or guardians and school personnel who make informal complaints as set forth above may request that their name be maintained in confidence by the school staff member(s) and administrator(s) who receive the complaint. The anonymous complaint is reviewed and reasonable action is taken to address the situation, to the extent such action (1) does not disclose the source of the complaint, and (2) is consistent with the due process rights of the student(s) alleged to have committed acts of hazing, bullying and/or dating violence.

Intervention Strategies

1. Teachers and Other School Staff

In addition to addressing both informal and formal complaints, school personnel are encouraged to address the issue of hazing, bullying and/or dating violence in other interactions with students.

School personnel may find opportunities to educate students about harassment, hazing, intimidation and bullying and help eliminate such prohibited behaviors through class discussions, counseling and reinforcement of socially appropriate behavior. School personnel should intervene promptly whenever they observe student conduct that has the purpose or effect of ridiculing, humiliating or intimidating another student/school personnel, even if such conduct does not meet the formal definition of harassment, hazing, intimidation or bullying.

2. Administrator Responsibilities

A. Investigation

The principal/designee is notified of any formal or informal complaint of suspected harassment, hazing, intimidation or bullying. Under the direction of the building principal/designee, all such complaints are investigated promptly. A written report of the investigation is prepared when the investigation is complete. The report includes findings of fact, a determination of whether acts of hazing, bullying and/or dating violence were verified, and when prohibited acts are verified, a recommendation for intervention, including disciplinary action, is included in the report. Where appropriate, written witness statements are attached to the report.

Notwithstanding the foregoing, when a student, parent, guardian or school employee/volunteer making an informal complaint has requested anonymity, the investigation of such complaint is limited as is appropriate in view of the anonymity of the complaint. Such limitation of the investigation may include restricting action to a simple review of the complaint (with or without discussing it with the alleged perpetrator), subject to receipt of further information and/or the withdrawal by the complaining student of the condition that his/her report be anonymous.

B. Nondisciplinary Interventions

When verified acts of hazing, bullying and/or dating violence are identified early and/or when such verified acts do not reasonably require a disciplinary response, students may be counseled as to the definition of the behavior, its prohibition and their duty to avoid any conduct that could be considered harassing, hazing, intimidating and/or bullying.

If a complaint arises out of conflict between students or groups of students, peer mediation may be considered. Special care, however, is warranted in referring some cases to peer mediation. A power imbalance may make the process intimidating for the victim and therefore inappropriate. The victim's communication and assertiveness skills may be low and could be further eroded by fear resulting from past intimidation and fear of future intimidation. In such cases, the victim should be given additional support. Alternatively, peer mediation may be deemed inappropriate to address the concern.

C. Disciplinary Interventions

When acts of harassment, intimidation and bullying are verified and a disciplinary response is warranted, students are subject to the full range of disciplinary consequences. Anonymous complaints that are not otherwise verified, however, cannot provide the basis for disciplinary action.

In and out-of-school suspension may be imposed only after informing the accused perpetrator of the reasons for the proposed suspension and giving him/her an opportunity to explain the situation.

Expulsion may be imposed only after a hearing before the Board of Education, a committee of the Board or an impartial hearing officer designated by the Board of Education in accordance with Board policy. This consequence is reserved for serious incidents of harassment, intimidation or bullying and/or when past interventions have not been successful in eliminating prohibited behaviors.

Allegations of criminal misconduct are reported to law enforcement, and suspected child abuse is reported to Child Protective Services, per required timelines.

Report to the Parent or Guardian of the Perpetrator

If, after investigation, acts of harassment, intimidation and bullying by a specific student are verified, the building principal/designee notifies the parent or guardian of the perpetrator, in writing, of that finding. If

disciplinary consequences are imposed against such student, a description of such discipline is included in such notification.

Strategies are developed and implemented to protect students from additional harassment, intimidation or bullying, and from retaliation following reporting of incidents.

Reports to the Victim and/or His/Her Parent or Guardian

If, after investigation, acts of bullying or hazing against a specific student are verified, the building principal/designee notifies the victim and/or the parent/guardian of the victim of the finding. In providing such notification, care must be taken to respect the statutory privacy rights of the perpetrator.

Bullying matters, including the identity of both the charging party and the accused, are kept confidential to the extent possible. Although discipline may be imposed against the accused upon a finding of guilt, retaliation is prohibited.

School administrators shall notify both the parents of a student who commits acts of harassment, intimidation, bullying and/or dating violence and victim and/or the parents or guardians of students against whom such acts were committed, and shall allow access to any written reports pertaining to the incident, to the extent permitted by law.

Police and Child Protective Services

In addition to, or instead of, filing a complaint through this policy, a complainant may choose to exercise other options including, but not limited to, filing a complaint with outside agencies or filing a private lawsuit. Nothing prohibits a complainant from seeking redress under any other provision of the Ohio Revised Code or common law that may apply.

The District must also investigate incidents of hazing, bullying and/or dating violence for the purpose of determining whether there has been a violation of District policy or regulations, even if law enforcement and/or the public children's services are also investigating.

All District personnel must cooperate with investigations by outside agencies.

[Adoption date: March 20, 2012]

Code of Conduct

INTRODUCTION

In order to protect a student's right to an education, the State of Ohio has given the Board of Education the authority, by statute, to "make such rules and regulations as are necessary for its government and the government of its employees, pupils of its schools, and all other persons entering upon its school ground or premises."

Good conduct is based on respect and consideration for the rights of others. The Reynoldsburg City Schools support and promote the Reynoldsburg Compact on Respect.

Students will be expected to conduct themselves in such a way that the rights of others are not violated. Students will respect school authority, conform to school regulations, and accept directions from

authorized school personnel. A student who fails to comply with established school rules or with any reasonable request made by school personnel on school property and/or at school related events will be dealt with according to approved student discipline regulations.

The building principal is charged with the overall control and discipline of all students in his/her building. However, the primary responsibilities of management and discipline of students is in the hands of each teacher. Parents will also be informed of the conduct expected of students. Students are reminded that they are responsible for their actions toward school personnel and school property during all school-related activities and events, even when such activities occur off school grounds.

Students are subject to school discipline for behavior that violates Board of Education Policy, the school's policies and the rules established in this Code of Conduct.

Discipline policies are designed to

- Protect the health, safety, and welfare of each student
- Maintain an atmosphere and climate conducive to learning
- Protect the building and grounds from vandalism and destruction

The administration reserves the right to exercise flexibility and individuality in interpreting and implementing the Student Code of Conduct in compliance with the Reynoldsburg Board of Education Policy. This also means the administration may develop appropriate rules and regulations as called for by various situations. In addition, the administration may, in severe or unusual cases, or in cases where it is in the best interest of the student(s), to discipline students in ways other than stated specifically in the Student Code of Conduct.

Students who fail to report, or report on time, or fail to serve the full duration of lesser consequences, may have additional assignments of those consequences or additional disciplinary consequences assigned by the administration. Repeated violations of school rules and regulations are a violation of the Student Code of Conduct. Consequences will vary depending on the severity and number of previous disciplinary actions and may include removal, suspension, and/or expulsion.

Students who have concerns about confidential misconduct issues are encouraged to use the student Safe School Helpline at 1-800-418-6423, ext. 359 or email confide2sv@aol.com.

CODE OF CONDUCT VIOLATIONS

The following infractions constitute major disciplinary violations. Consequences will be issued at the discretion of the administrator. This Code of Conduct is in effect while (1) students are under the authority of school personnel and/or (2) during all school-related activities and events, even when such activities occur off school grounds. The Code of Conduct applies to school buses, extracurricular events and to some alternative education programs. In addition, this Code of Conduct includes

- Misconduct by a student that occurs off school district property but is connected to activities or incidents that have occurred on school district property, and
- Misconduct by a student that, regardless of where it occurs, is directed at a district official or employee or at the property of an official or employee.

Consequences for the following behaviors are either identified with the specific violation or are described in the section entitled "Disciplinary Consequences".

1. **Alcohol/Drugs** – A student will not knowingly use, possess, sell, conceal, distribute or be under the influence of any narcotic drug, hallucinogenic drug, amphetamine, barbiturate, marijuana, steroid, controlled substance, drug paraphernalia, look-alike drug, alcoholic beverage, or intoxicant of any kind while on school grounds during, before, or after school hours, off the school grounds at a school activity, function or event, or on school buses or rented carriers.

2. **Assault** – A student shall not knowingly or with reckless disregard cause physical injury, or threaten to cause physical injury, to any person.
3. **Cheating** – A student shall not plagiarize (i.e., use another's thoughts, words or ideas as one's own). A student shall not provide work for another student's use or use unauthorized materials or devices. Cheating may result in no credit for an assignment as well as other disciplinary consequences.
4. **Dangerous Weapon other than a Firearm or Explosive, Incendiary or Poison Gas** – A student shall not use, possess, sell or distribute a weapon, device, instrument, material, or substance, animate or inanimate, that is used for, or is readily capable of causing death or serious bodily injury. Dangerous weapons include, but are not limited to laser pointers, knives, metal knuckles, pocket chains, martial arts devices, or other dangerous instruments which could be mistakenly identified as dangerous instruments.
5. **Disrespect** – A student shall not demonstrate disrespect through action, attitude, or word to any school staff member, guest or other students.
6. **Disruption of School** – A student shall not exhibit behavior that is deemed by the teacher or staff member in authority to be disruptive to the normal operation of the school. Such behavior includes violence, force, coercion, threat, noise, passive resistance, or other disorderly conduct (e.g., setting fires; firing explosives) that causes or attempts to cause disruption or obstruction to the normal school operation.
7. **Dress Code** – A student must wear appropriate clothing and footwear at all times that is in accordance with the established dress code and Board Policy. Student clothing and appearance must be appropriate for the educational climate and should not create a safety hazard or distraction to the educational process.
8. **Explosive, Incendiary or Poison Gas** – A student shall not use, possess, sell or distribute any destructive device, which would include a bomb, a grenade, a rocket having a propellant charge, a missile having an explosive or incendiary charge or a similar device. This includes any weapon that will, or that may be readily converted to, expel a projectile by the action of an explosive or other propellant.
9. **Extortion** – A student shall not use force or intimidation to obtain anything (e.g., privileges, property, money) from another person. This would include begging, borrowing and panhandling.
10. **False Alarms/Bomb Threats** – A student shall not make any threat (verbal, written or electronic) to bomb or use other substances or devices for the purpose of exploding, burning, causing damage to a school building or school property, or to harm students or staff.
11. **Fighting** – A student shall not strike, push or fight with another person. This includes mutual participation in an incident involving physical violence, regardless of who initiated the incident. An individual whose deliberate behavior directly leads to a fight between other parties shall be considered a participant, and may receive consequences as a result of their actions.
12. **Firearm** – A student shall not use, handle, transmit, transport, sell, conceal, distribute or possess any weapon which will, is designed to, or may readily be converted to expel a projectile by the action of an explosive; the frame or receiver of any such weapon; any firearm or firearm silencer; or any machine gun. This includes, but is not limited to, zip guns, starter guns and flare guns.
13. **Firearm Look-a-Likes** – A student shall not use, possess, sell or distribute any item that resembles a firearm but does not have the explosive characteristics of a firearm but may use a spring loaded device or air pressure by which to propel an object or substance. This includes, but is not limited to, toy guns, cap guns, bb guns and pellet guns that are indistinguishable from a firearm.

14. **Forgery, Falsification and Lying** – A student shall not falsely represent or attempt to falsely represent any information given to school officials or pertinent to school activities or use the name or identity of another person.
15. **Gambling** – A student shall not play a game for money or other considerations. Gambling includes, but is not limited to, casual betting, betting pools, organized sports betting, and any other form of wagering. Students who bet on an activity in which they are involved may also be banned from that activity.
16. **Hazing** -- Hazing is prohibited. Hazing is defined as doing any act of coercing another, including the victim, to do any act of initiation into any student or other organization that causes or creates a substantial risk of causing mental or physical harm to any person. Permission, consent, or assumption of risk by an individual subjected to hazing does not lessen the prohibition contained in this policy.
17. **Inappropriate Materials** – A student shall not possess, bring, transmit, conceal, sell, or offer to sell material which is considered by reasonable standards of the school community to be offensive, obscene, sexually explicit, gang-related, violent and/or pornographic.
18. **Insubordination** – A student shall comply with any reasonable instruction(s) of school staff/employees during any period of time when he or she is under the authority of such school personnel (e.g., identification of student by name when requested).
19. **Interference with an Investigation** – A student shall not interfere with school personnel during an investigation or apprehension. This includes failing to tell the truth, serving as a “look-out” for a person(s) violating rules, or attempting to prevent the apprehension of another person.
20. **Internet/Computer Abuse** – The internet and school computers and computer equipment will be used for educational purposes only. A student will not submit, publish, print or display any defamatory, threatening, sexually explicit, racially offensive or illegal material, nor shall a student encourage the use of controlled substances. A student shall not transmit material, information, or software in violation of any local, state, or federal law. A student will obey the electronic network/internet user contract. Parents and students will be required to sign a contract prior to student internet access.
21. **Loitering** – A student shall not loiter in restrooms, hallways, or on school grounds during, or after the school day or during school activities. Students are not to be in any area of the building or ground without permission.
22. **Persistent and Expanded Behavior/Repeat Violations/Failure to Serve Consequences** – A student shall not persist in inappropriate behavior or escalate to a point of danger to self or others. Students who continually break school rules will face greater consequences. A student shall not fail to report, report on time or serve the full duration of consequences.
23. **Possession of Unauthorized Devices** – A student shall not bring or possess unauthorized devices that interfere with the educational process and/or safety of the school community. Unauthorized devices include, but are not limited to, pagers, beepers, radios, CD players, MP3 and tape players, expensive jewelry, electronic games, toys, water guns, and laser pointers. The administration reserves the right to hold any unauthorized device, and release the item only to the student’s parent or guardian. A student bringing an unauthorized device does so at his/her own risk. The school will not investigate lost or stolen unauthorized devices.
24. **Profanity/Abusive Language** – A student shall not use profane, vulgar, abusive, obscene, or other words, which under the circumstances, are offensive by reasonable standards of the school district community or which disrupt normal school activities.
25. **Public Display of Affection/Sexual Misconduct** – A student is prohibited from demonstrating physical actions which are considered by reasonable standards of the school district community to be inappropriate for the school environment. This includes, but is not limited to, kissing and hugging,

pinching, grabbing, suggestive comments or jokes, welcome or unwelcome sexual advances, requests for sexual favors or other physical or verbal communication of a sexual nature that creates an intimidating, hostile or offensive educational environment.

26. **Serious Bodily Injury** – A student shall not cause serious bodily injury to oneself or others. Serious Bodily Injury is defined as “A bodily injury that involves substantial risk of death; extreme physical pain; protracted and obvious disfigurement; or protracted loss or impairment of the function of a bodily member, organ or faculty” (18 U.S.C. Section 1365(3)(h)).
27. **Theft** – A student shall not take, receive, nor attempt to take or receive into his or her possession property of the school district or property of another student, teacher, visitor, or employee of the school district without privilege to do so. The school will make a reasonable effort to recover or obtain restitution, but is not held responsible for stolen items.
28. **Threatening Behavior (including Bullying, Harassment, Intimidation and Gang-related Behavior)** – A student shall not engage in any behavior which threatens or degrades another person by written, verbal, or nonverbal means. Threatening behavior consists of any words or deeds that intimidate, harass or cause fear concerning a person's physical well-being or is intended to degrade or disgrace the person toward whom the behavior is directed. (See Non-Discrimination Policy)

A student shall not wear, carry or display gang paraphernalia; exhibit behavior which symbolizes gang membership; or cause and/or participate in activities which intimidate or affect the attendance of another student. A student shall not be involved in initiations, hazing, intimidations and/or related activities of group affiliations which are likely to cause bodily danger, physical harm, and personal degradation or disgrace resulting in physical or mental harm.

29. **Trespassing** – A student shall not enter school property before, during or after school hours without express permission of an appropriate school official.
30. **Truancy/Nonattendance** – Truancy includes, but is not limited to, leaving school without permission, being absent from school without a parent's knowledge, being absent from class without permission, obtaining a pass to a specified place and failing to report there, coming to school, but not attending classes or parents unable to get their student to school. In-school truancy occurs when a student is somewhere other than where a staff member directs or where the schedule designates. Out-of-school truancy occurs when a student leaves the designated building area or does not attend school without parental consent for the absence. Nonattendance applies to students who are 18 and over.
31. **Tobacco** – A student shall not smoke, use, possess or distribute tobacco or tobacco products on school grounds or at school-sponsored activities. A tobacco product is any product that is made from tobacco, including, but not limited to, a cigarette, a cigar, pipe tobacco, chewing tobacco or snuff. A cigarette includes clove cigarettes and hand-rolled cigarettes. Tobacco-related products, such as matches and lighters, are also prohibited.
32. **Vandalism** – A student shall not knowingly or with reckless disregard cause or attempt to cause damage to or deface school property or private, personal property including but not limited to buildings, grounds, equipment, materials, or computers or other technology. In accordance with state law, parent(s) may be liable for payment for the cost to repair or replace any such property damage caused by the acts of their children.

DISCIPLINARY CONSEQUENCES/DEFINITIONS

The following provides general steps for application of consequences for violations of the Code of Conduct. Individual incidents will be reviewed taking the student, the student's educational and disciplinary record, the frequency and intensity of the infraction and the context in which the infraction

occurred into consideration. The administration reserves the right to exercise flexibility and individuality in interpreting and implementing the Student Code of Conduct. Any step may be waived at the administrator's discretion.

1. Verbal Reprimand
2. Restriction of Privileges
3. Alternative Education Placements: The suspension of the student's normal instructional activities by the Superintendent or school principal due to discipline reasons. Placements include the following:
 - The student attends school but is assigned a special placement that allows him/her to do school work but does not specifically address the behavior that resulted in the discipline.
 - The student attends a special class, program, or building that specifically addresses the behavior(s) that resulted in discipline. This may occur within or outside the district. Some alternative education placements outside the district are governed by the Code of Conduct of the referring school and the policy of the Reynoldsburg City Schools.
4. Removal from Activity
5. Parent Contact
6. Restitution
7. Emergency Removal from School or School Activity: If a student's presence poses a continuing danger to persons or property or an ongoing threat of disrupting the academic process taking place either within a classroom or elsewhere on the school premises, the Superintendent or a principal or assistant principal may remove a student from curricular activities or from the school premises, and a teacher may remove a student from curricular activities under the teacher's supervision, without the notice and hearing requirements for out-of-school suspension.
8. Out-of-School Suspension: The denial of attendance at school and the suspension of the student's normal instructional activities by the Superintendent or school principal due to discipline reasons. Suspension from school shall not exceed 10 days for each occurrence. During the suspension, students are not permitted on school grounds or at school functions throughout the district without permission from the Principal or designee.

Appeal: If the student or the parent/guardian chooses to appeal a suspension to the Superintendent or his designee, he/she must do so within 10 days of the notice of suspension. The student or the parent/guardian has a right to be represented at such a hearing. The student or the parent/guardian may appeal the Superintendent's decision to the Board of Education and has a right to be represented at such a hearing. Under State law, appeal of the Board's decision may be made to the Court of Common Pleas.

9. Recommendation to Superintendent for Expulsion: The involuntary removal of a student from school by the Superintendent. The Superintendent may expel a student from school for a period of 80 school days or up to one (1) calendar year, depending on the severity of the infraction. The student may not take part in any school activity or on school property without permission of the Principal or designee. Within one week prior to returning to school, the student and parent must schedule a reenrollment conference with his/her grade level administrator.

Appeal: The student or the parent/guardian may appeal an expulsion to the Board of Education and has a right to be represented at such a hearing. Under State law, appeal of the Board's decision may be made to the Court of Common Pleas.

10. Community Service

11. Parent Shadowing
12. Notification of Civil Authorities
13. Court Citation
14. Other alternative comparable, acceptable and fair consequences (e.g., withholding grades and transcripts for a student who owes money for materials used in a course of study, or damage to school property)

POSITIVE BEHAVIORAL INTERVENTIONS AND SUPPORTS (Restraint and Seclusion)

The District requires each building to implement an evidence-based, school-wide system or framework of non-aversive Positive Behavior Intervention and Supports (“PBIS”) by its employees to address inappropriate behavior by District students. As part of this framework, the District’s educational environments shall be structured to greatly reduce, and in most cases eliminate, the need to use the techniques of restraint or seclusion on District students. The PBIS prevention-oriented framework applies to all students, all staff, and in all settings.

Physical restraint and/or seclusion may only be used by trained District employees, and only when the dangerous behavior of a student creates an immediate risk of physical harm to the student or others and no alternative safe and effective intervention strategy is possible. Further, those techniques must be used in a manner that is age and developmentally appropriate. District employees shall utilize physical restraint and seclusion only in a manner that protects the safety of all children and adults within the District. Practices that do not adhere to the standards and requirements set forth in Board policy and District procedures are prohibited.

DEFINITIONS

Aversive Behavioral Interventions: an intervention that is intended to induce pain or discomfort to a student for the purpose of eliminating or reducing maladaptive behaviors, including such interventions as application of noxious, painful and/or intrusive stimuli, including any form of noxious, painful or intrusive spray, inhalant or tastes.

Chemical Restraint: a drug or medication used to control a student’s behavior or restrict freedom of movement that is not:

- A. Prescribed by a licensed physician, or other qualified health professional acting under the scope of the professional’s authority under Ohio law, for the standard treatment of a student’s medical or psychiatric condition; and
- B. Administered as prescribed by the licensed physician or other qualified health professional acting under the scope of the professional’s authority under Ohio law.

Mechanical Restraint:

- A. Any method of restricting a student’s freedom of movement, physical activity, or normal use of the student’s body by using an appliance or device manufactured for this purpose; but

- B. Does not mean a device used by trained school personnel, or used by a student, for the specific and approved therapeutic or safety purpose for which the device was designed and, if applicable, prescribed, including:
 - 1. Restraints for medical immobilization;
 - 2. Adaptive devices or mechanical supports used to allow greater freedom of mobility or proper positioning as needed for stability than would be possible without the use of such devices or mechanical supports; or
 - 3. Vehicle safety restraints when used as intended during the transport of a student in a moving vehicle.

Parent:

- A. A biological or adoptive parent;
- B. A guardian generally authorized to act as the child's parent, or authorized to make decisions for the child (but not the state if the child is a ward of the state);
- C. An individual acting in the place of a biological or adoptive parent (including a grandparent, stepparent or other relative) with whom the child lives, or an individual who is legally responsible for the child's welfare;
- D. A surrogate parent who has been appointed for a student with a disability in accordance with O.A.C. §3301-51-05 (E); or
- E. Any person identified in a judicial decree or order as the parent of a child or the person with authority to make educational decisions on behalf of a child.

Physical Escort: the temporary touching or holding of the hand, wrist, arm, shoulder, waist, hip, or back for the purpose of inducing a student to move to a safe location.

Physical Restraint: the use of physical contact in a way that immobilizes or reduces the ability of an individual to move the individual's arms, legs, body, or head freely. Such term does not include a physical escort, mechanical restraint, or chemical restraint. Physical restraint does not include brief physical contact for the following or similar purposes:

- A. To break up a fight;
- B. To knock a weapon away from a student's possession;
- C. To calm or comfort;
- D. To assist a student in completing a task/response if the student does not resist the contact; or
- E. To prevent an impulsive behavior that threatens the student's immediate safety (e.g. running in front of a car).

Positive Behavior Intervention and Supports:

- A. A school-wide systematic approach to embed evidence-based practices and data-driven decision making to improve school climate and culture in order to achieve improved academic and social outcomes, and increase learning for all students; and
- B. Encompasses a range of systemic and individualized positive strategies to reinforce desired behaviors, diminish reoccurrences of challenging behaviors, and teach appropriate behaviors to students.

Prone Restraint: physical or mechanical restraint while the individual is in the face-down position for an extended period of time.

Seclusion: the involuntary isolation of a student in a room, enclosure, or space from which the student is prevented from leaving by physical restraint or by a closed door or other physical barrier.

Student Personnel: teacher, principal, counselor, social worker, school resource officer, teacher's aide, psychologist, bus driver, or other District staff members who interact directly with students.

Timeout: a behavior intervention in which a student, for a limited and specified time, is separated from the class within the classroom or in a non-locked setting for the purpose of self-regulating and controlling his or her own behavior. In a timeout, the student is not physically restrained or prevented from leaving the area by physical barriers.

PROHIBITED PRACTICES

The following are prohibited under all circumstances, including emergency safety situations:

- A. Prone restraint as defined in Executive Order 2009-13S (which defines prone restraint to mean "all items or measures used to limit or control the movement or normal functioning of any portion, or all, of an individual's body while the individual is in a face-down position for an extended period of time.);
- B. Corporal punishment;
- C. Child endangerment as defined in O.R.C. §2919.22;
- D. Seclusion or restraint of preschool students in violation of the provisions of O.A.C. §3301-37-10(D);
- E. The deprivation of basic needs;
- F. Restraint that unduly risks serious harm or needless pain to the student, including the intentional, knowing, or reckless use of any of the following techniques:
 - 1. Using any method that is capable of causing loss of consciousness or harm to the neck or restricting respiration in any way;
 - 2. Pinning down with knees to torso, head and/or neck;
 - 3. Using pressure points, pain compliance and joint manipulation techniques;
 - 4. Dragging or lifting of the student by the hair or ear or by any type of mechanical restraint;
 - 5. Using other students or untrained staff to assist with the hold or restraint; or
 - 6. Securing a student to another student or to a fixed object.
- G. Mechanical or chemical restraints (which does not include devices used by trained school personnel, or by a student, for the specific and approved therapeutic or safety purposes for which such devices were designed and, if applicable, prescribed, or medication administered as prescribed by a licensed physician);
- H. Aversive behavioral interventions; or

- I. Seclusion of students in a locked room.

RESTRAINT

District employees are prohibited from using the emergency safety intervention techniques of “prone restraint” (physical or mechanical restraint while the student is in the face down position), physical restraint that obstructs the airway of a student, or any physical restraint that impacts a student’s primary mode of communication.

Physical restraint may be used only when there is an immediate risk of physical harm to the student or others and no other safe and effective intervention is possible, and only in a manner that is age and developmentally appropriate.

Employees authorized to use the technique of physical restraint must:

- A. Be appropriately trained to protect the care, welfare, dignity and safety of the student;
- B. Continually observe the student in restraint for indications of physical or mental distress and seek immediate medical assistance if there is a concern;
- C. Use verbal strategies and de-escalation techniques in an effort to help the student regain control;
- D. Immediately remove the student from physical restraint when the risk of physical harm to himself/herself or others has dissipated;
- E. Conduct a debriefing with all involved staff to evaluate the trigger for the incident, staff response, and methods to address the student’s behavioral needs; and
- F. Complete all required reports and document staff observations of the student.

If a student repeatedly engages in dangerous behavior that leads to instances of restraint, the District shall conduct a functional behavioral assessment to identify the student’s needs and more effective ways to address those needs. If necessary, the functional behavioral assessment will be followed by a behavioral intervention plan that incorporates appropriate positive behavioral interventions.

SECLUSION

Seclusion is a last resort safety intervention that provides an opportunity for the student to regain self-control. Seclusion may be used only when there is an immediate risk of physical harm to the student or others and no other safe and effective intervention is possible. Seclusion shall never be used as a punishment or to force compliance, and should only be used in a manner that is age and developmentally appropriate.

A room or area used for seclusion shall provide for adequate space, lighting, ventilation, clear visibility, and the safety of the student. The room or area used for seclusion shall never be locked.

Seclusion shall not be used for:

- A. The convenience of staff;
- B. As a substitute for an educational program;
- C. As a form of discipline or punishment;
- D. As a substitute for less restrictive alternatives;
- E. As a substitute for inadequate staffing;

- F. As a substitute for staff training in PBIS and crisis prevention and intervention; or
- G. As a means to coerce, retaliate, or in a manner that endangers a student.

Staff using the technique of seclusion must:

- A. Be appropriately trained to protect the care, welfare, dignity, and safety of the student;
- B. Continually observe the student in seclusion for indications of physical or mental distress and seek immediate medical assistance if there is a concern;
- C. Use verbal strategies and research-based de-escalation techniques in an effort to help the student regain control as quickly as possible;
- D. Remove the student when the immediate risk of physical harm to self or others has dissipated;
- E. Conduct a de-briefing, including all involved staff, to evaluate the trigger for the incident, staff response, and methods to address the student's behavioral needs; and
- F. Complete all required reports and document their observation of the student.

If a student repeatedly engages in dangerous behavior that leads to instances of seclusion, the school district shall conduct a functional behavioral assessment to identify the student's needs and more effective ways of addressing those needs. If necessary, a functional assessment will be followed by a behavioral intervention plan that incorporates appropriate positive behavioral interventions.

TRAINING AND PROFESSIONAL DEVELOPMENT

All student personnel shall be trained annually on the Ohio Department of Education's policy regarding PBIS and restraint and seclusion, O.A.C. §3301-35-15, the Board's policy and these Administrative Guidelines. Such training shall be kept current in accordance with the requirements of the provider of the training. The District shall maintain written or electronic documentation on such training, which shall include a list of all employees who have participated in the training. Further, an adequate number of employees in each building in the District shall be trained in crisis management and de-escalation techniques.

REQUIRED DATA AND REPORTING

Each use of seclusion or restraint shall be documented in writing and immediately reported to building administration and the parents of the student restrained or secluded. A copy of the report shall be made available to the parent or guardian within twenty-four (24) hours, and the school shall maintain a copy of the report in the student's file.

MONITORING AND COMPLIANCE

Parents of District students may submit written complaints to the Superintendent regarding an incident of restraint or seclusion. Upon receipt of such complaint, the Superintendent shall initiate an investigation of the incident, and shall respond to the parent's complaint, in writing, within thirty (30) days of receiving the parent's

OPEN ENROLLMENT CHANGE of ADDRESS

All residency and custody changes must be reported to Reynoldsburg City School's Welcome Center located at 1555 Graham Rd. within **10 days** of the legal date change.

- Any change in residency - moving within or out of Reynoldsburg City School District boundaries - requires new proof of residency be presented in the form of a signed lease or settlement statement.
- Custody changes – including divorce or changes in existing shared parenting plans – require finalized court papers to be on file, in accordance with Ohio law.

Failure to present required documents will constitute a falsification of applications and/or enrollment documents resulting in denial of all new or existing Open Enrollment, Intra-district Agreement, or School of Choice requests.

Rose Hill Elementary

School Calendar

2015-2016

August

3

School Office Opens [9:00am-12:00pm & 1:00-3:00pm]
Kindergarten Screening – KRAL by appointment only

13

Teacher In-Service ½ Day
Back to School Night 5:30pm-6:30pm
Fall Fundraiser Begins

14

Teacher In-Service Full Day

17

FIRST DAY OF SCHOOL for students last name A-L

18

FIRST DAY OF SCHOOL for students last name M-Z

19

ALL STUDENTS ATTEND

September

7

NO SCHOOL – Labor Day

14

Progress Reports due

October

15

End of 1st 9-weeks (42 days)

19

First Day of Second Quarter

22/28

Parent/Teacher Conferences – 3:00-7:00pm

30

Fall Festival Parties:

9:45-10:50am – Kindergarten am

1:30-2:30pm – Kindergarten pm, grades 1-4

November

3

NO SCHOOL

25-27

NO SCHOOL-Thanksgiving Break

December

18

End of 2nd 9-weeks (44 days)

Winter Parties:

9:45-10:30am – Kindergarten AM

54

21-January 1

1:45-2:30pm – Kindergarten PM, grades 1-4
NO SCHOOL – Winter Break

January

4

First day of Third Quarter

18

First day back from Winter Break

29

NO SCHOOL – Martin Luther King Day

NO SCHOOL-Teacher In-Service Day

February

4/10

Parent/Teacher Conferencess-3:00-7:00pm

12

NO SCHOOL-Parent/Teacher Conferencess

15

NO SCHOOL-Presidents' Day

March

11

End of 3rd Nine Weeks (45 days)

14

First Day of Fourth Quarter

25-1

NO SCHOOL-Spring Break

April

1

NO SCHOOL-Spring Break

4

SCHOOL RESUMES

May

26

4th Grade Recognition Ceremony:

9:00am– Ceremony begins

LAST DAY FOR STUDENTS

29

End of 4th Nine Weeks (48 days)

Teacher In-Service for Teachers – ½ day AM

June

3

School Office Closes

Dates and times subject to change!

2015-2016 STUDENT HANDBOOK SIGNATURE PAGE

(Return to classroom teacher)

Student's Full Name (please PRINT clearly): _____

Teacher: _____ Grade: _____ Parent/Guardian Name (PRINTED): _____

Part 1

STUDENT/PARENT HANDBOOK

I have (please check one) _____ accessed the Student/Parent Handbook online OR _____ received a hard copy of the Student/Parent Handbook from the school office and have reviewed its content with my son/daughter. We have specifically reviewed the following (initial each after reviewing):

____ Attendance Policy (p.8-10) ____ Cell Phone Policy (p.22) ____ Conduct/Discipline Policy (p.16-19)
____ Dress Code Policy (p.20-21) ____ Visitation Policy (p.10) ____ Volunteer Policy (p.26)
____ Traffic Safety Policy (p.23-24) ____ Home/School Compact for Student Learning (p.29-30)

Signature of Parent/Guardian

Date

Student Signature

Date

Part 2 - A

COMPUTER AND TECHNOLOGY ACCEPTABLE USE AND SAFETY AGREEMENT

I have read, understand and agree to abide by the Network Acceptable Use Policy. I agree to report any misuse of the technology to the building principal or central office technology department and to cooperate in any investigations regarding security issues and/or improper or illegal uses of the technology. I understand that my technology account may be monitored. I agree to exercise responsibility by using my best efforts not to violate this Policy.

I understand that any violation of this Policy may subject me to restriction or termination of my access to district technology, discipline in accordance with the student handbook, other Board policies, referral to legal authorities, and/or other legal action.

By signing below, I agree to release the Reynoldsburg City School district, its administrators, teachers, employees and Board members, from any claims or damages arising as a result of and in connection with my failure to follow school policies regarding use of the Network, including claims or damages arising from the student giving his/her user name or password to another student.

Student Name (Printed)

Student Signature

Date

Part 2 - B

As a parent or legal guardian of the minor student signing above, I grant permission for my daughter/son/ward to access district technologies, including networked computer services such as the Internet. I understand that individuals and families may be held liable for violations. I understand that some accessible materials may be objectionable, and I accept responsibility for setting and conveying standards for my daughter/son/ward to follow when selecting, sharing, or exploring information and media.

By signing below, I agree to release the Reynoldsburg City School District, its administrators, teachers, employees and Board members, from any claims or damages arising as a result of and in connection with my child's/ward's failure to follow school policies regarding use of the Network, including claims or damages arising from the student giving his/her user name or password to another student.

Parent/Guardian Signature

Date

Home Phone Number

Student ID Number

Work Phone Number

Student Date of Birth